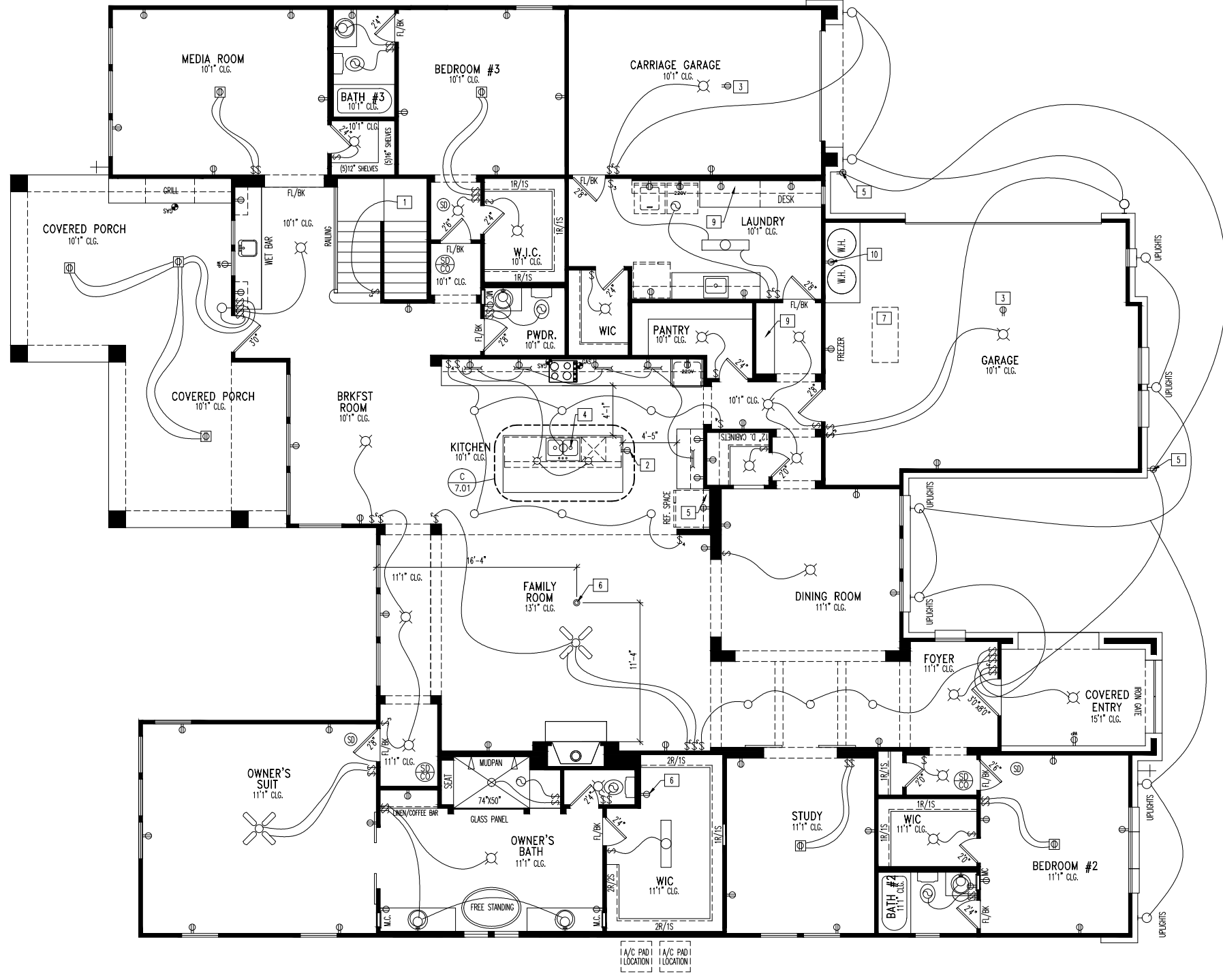


****ATTENTION****
DRAWINGS ARE
PRINTED AT
3/32" =
1'-0"
SCALE



General Notes
 1. REFER TO SHEET ON.1 FOR GENERAL NOTES.

- Key Notes**
- 1 TO LIGHT OR SWITCH
 - 2 HOLD OUTLET HIGH ON ISLAND
 - 3 OUTLET IN CEILING
 - 4 DISPOSAL AND DISHWASHER DISCONNECT SWITCH UNDER CABINET
 - 5 ALLOW 3'3" FOR FINISHED CABINET SPACE
 - 6 OUTLET @ 45" A.F.F.
 - 7 PULL DOWN STAIRS W/ LIGHT AND OUTLET (25 1/2" x 54")
 - 8 SHELF @ 57" A.F.F.
 - 9 BENCH SEAT PER SPECIFICATION MANUAL
 - 10 OUTLET FOR CIRCULATING PUMP

Mechanical Legend

◀ PHONE JACK	○ FLUORESCENT LIGHT
▲ HOME OFFICE OUTLET	— UNDER CABINET LIGHTING
□ DATA OUTLET	○ CLG. MOUNTED LIGHT FIXT.
PH PROJECTOR ROUGH-IN	○ WALL MOUNTED LIGHT FIXT.
EC ENTERTAINMENT CENTER OUTLET	○ RECESSED CEILING LIGHT
⊕ WALL OUTLET	○ DOUBLE SPOTLIGHT FIXT.
⊕ WEATHERPROOF OUTLET	○ DIRECTIONAL CAN LIGHT
220 220 OUTLET	○ PIN LIGHT
⊕ GROUND FAULT OUTLET	⊕ WALL SCONCE @ 5'-6" A.F.F.
○ FLOOR OUTLET	○ STAIR LIGHT
TV CABLE TELEVISION JACK	○ CLG. MTD. EXHAUST FAN
↔ SINGLE POLE SWITCH	○ WALL MTD. EXHAUST FAN
↔ 3-WAY SWITCH	○ SMOKE DETECTOR
↔ 4-WAY SWITCH	○ HOSE BIB
⊕ BLOCK, MOUNT, & SWITCH FOR FUTURE FAN/LIGHT COMBINATION (CENTER, UNLESS OTHERWISE NOTED)	○ SHOWER HEAD
⊕ EXHAUST FAN AND LIGHT COMBINATION	○ GAS GAS HOOK UP
	○ FLOOR DRAIN
	○ CO DETECTOR
	○ SMOKE DETECTOR/CO DETECTOR COMBINATION

Contract Revisions: (#, Date, By, Description)

i	
ii	
iii	
iv	



DREES CUSTOM HOMES L.P.
 6225 STATE HIGHWAY 161, SUITE 400, IRVING, TX. 75038
 (972) 953-4500
 Copyright © 2015, (2015) The Drees Company. All Rights Reserved. No portion of this material may be reproduced in any form or by any means, including photocopying, without the express written permission of the Drees Company. The Drees Company will vigorously prosecute any unauthorized use of this material.

House: **LINLEY**
 Series: SERIES_NM
 Plan No.: 7010

Std. Drawn By: BTW
 Sheet Description: **FIRST FLOOR MECHANICAL PLAN ELEVATION "A"**
 Std. Chk. By: ARC
 Std. Date: 2-24-15
 Date of Last Rev: REV_DATE

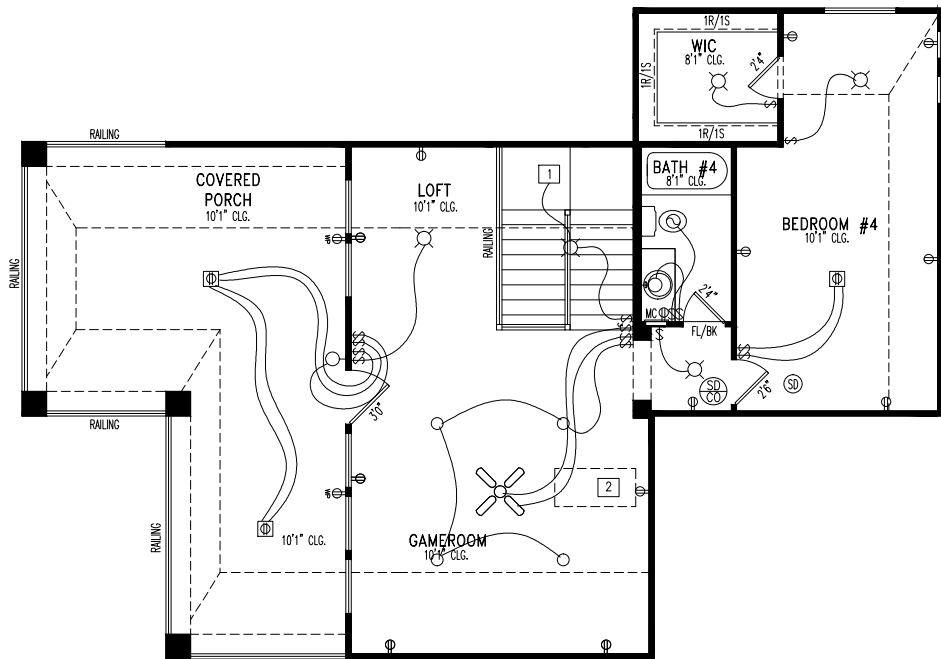
Contract Drawn By: **BLAKE W.**
 Phone #: 859-578-4319
 Coordinator's Name: **KRISTI B.**
 Coordinator's Phone #: 859-578-4338
 RAP-0019-1.dwg Feb 24, 2015 - 4:07pm

Original Site Specific Uwg. & Effective Change Order Date:
2/24/14

Subdivision: **RETREAT @ AUGUSTA PINES**
 Job #: **RAP-0019-1**
 Customer Name: **MODEL**
 Job Address: **24806 PACIFIC DUNES LANE**

Sheet No.: **4.01**

****ATTENTION****
DRAWINGS ARE
PRINTED AT
3/32" =
1'-0"
SCALE



General Notes

1. REFER TO SHEET ON.1 FOR GENERAL NOTES.

Key Notes

- 1 TO LIGHT OR SWITCH
- 2 PULL DOWN STAIRS W/ LIGHT AND OUTLET (25 1/2" x 54")
- 3 --
- 4 --
- 5 --
- 6 --
- 7 --
- 8 --
- 9 --
- 10 --

Mechanical Legend

◀ PHONE JACK	○ FLUORESCENT LIGHT
▲ HOME OFFICE OUTLET	— UNDER CABINET LIGHTING
□ DATA OUTLET	○ CLG. MOUNTED LIGHT FIXT.
▣ PROJECTOR ROUGH-IN	○ WALL MOUNTED LIGHT FIXT.
Ⓜ ENTERTAINMENT CENTER OUTLET	○ RECESSED CEILING LIGHT
⊕ WALL OUTLET	○ DOUBLE SPOTLIGHT FIXT.
⊕ WEATHERPROOF OUTLET	○ DIRECTIONAL CAN LIGHT
⊕ 220 OUTLET	○ PIN LIGHT
⊕ GROUND FAULT OUTLET	⊕ WALL SCONCE @ 5'-6" A.F.F.
⊕ FLOOR OUTLET	⊕ STAIR LIGHT
⊕ CABLE TELEVISION JACK	⊕ CLG. MTD. EXHAUST FAN
⊕ SINGLE POLE SWITCH	⊕ WALL MTD. EXHAUST FAN
⊕ 3-WAY SWITCH	⊕ SMOKE DETECTOR
⊕ 4-WAY SWITCH	⊕ HOSE BIB
⊕ BLOCK, MOUNT, & SWITCH FOR FUTURE FAN/LIGHT COMBINATION (CENTER, UNLESS OTHERWISE NOTED)	⊕ SHOWER HEAD
⊕ EXHAUST FAN AND LIGHT COMBINATION	⊕ GAS
	⊕ GAS HOOK UP
	⊕ FLOOR DRAIN
	⊕ CO DETECTOR
	⊕ SMOKE DETECTOR/CO DETECTOR COMBINATION

Contract Revisions: (#, Date, By, Description)

- i
- ii
- iii
- iv



DREES CUSTOM HOMES L.P.
 6225 STATE HIGHWAY 161, SUITE 400, IRVING, TX. 75038
 (972) 953-4500
 Copyright © 2015, (2015) The Drees Company. All Rights Reserved. No portion of this material may be reproduced in any form or by any means, including photocopying, without the express written permission of the Drees Company. The Drees Company will vigorously prosecute any unauthorized use of this material.

House: **LINLEY**
 Series: **SERIES_NM** Plan No.: **7010**
 Std. Drawn By: **BTW** Sheet Description: **SCALE: 1/8" = 1'-0"**
 Std. Chk. By: **ARC** **SECOND FLOOR MECHANICAL PLAN ELEVATION "A"**
 Std. Date: **2-24-15**
 Date of Last Rev: **REV_DATE**

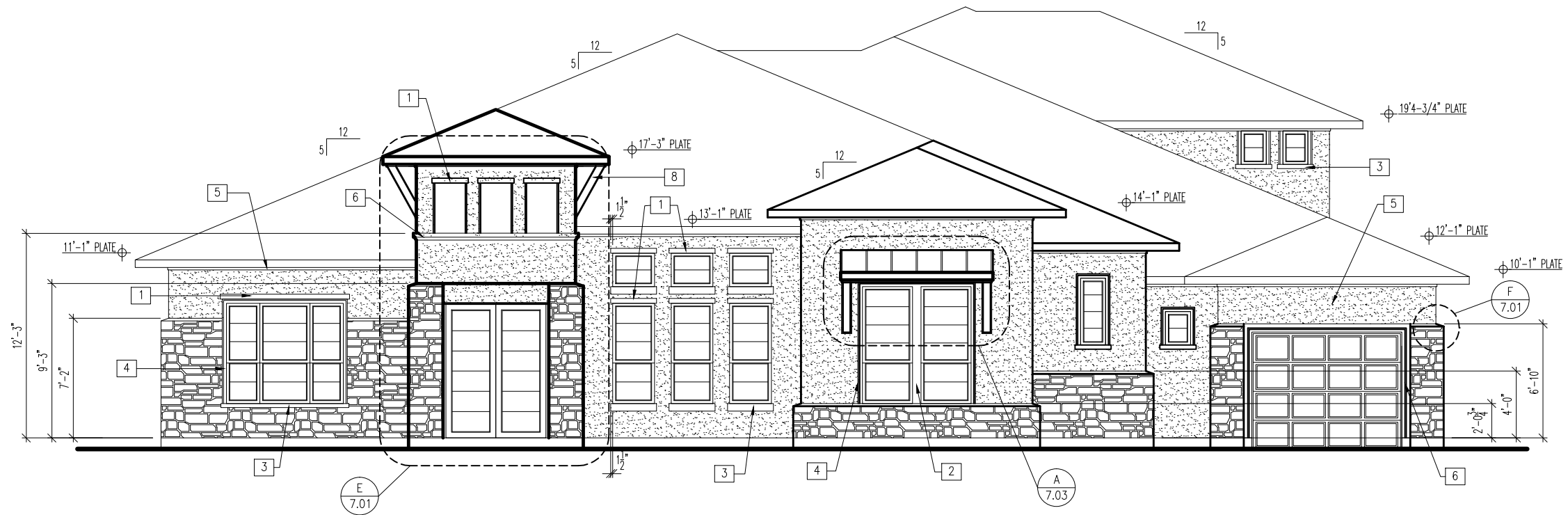
Contract Drawn By: **BLAKE W.** Original Site Specific Dwg. & Effective Change Order Date:
 Phone #: **859-578-4319**
 Coordinator's Name: **KRISTI B.**
 Coordinator's Phone #: **859-578-4338**
 RAP-0019-1.dwg Feb 24, 2015 - 4:07pm

2/24/14

Subdivision: **RETREAT @ AUGUSTA PINES**
 Job #: **RAP-0019-1**
 Customer Name: **MODEL**
 Job Address: **24806 PACIFIC DUNES LANE**

Sheet No.
4.02

NOTE:
1x6 FASCIA
1x4 FRIEZE



General Notes

1. REFER TO SHEET ON.1 FOR GENERAL NOTES.
2. ROOFING MATERIAL PER SPECIFICATIONS

- Key Notes**
- 1x4 STUCCO TRIM: EXTEND EDGES 1-1/2" PAST WINDOW
 - 1x6" STUCCO TRIM
 - STUCCO SILL
 - 3" STUCCO TRIM
 - STUCCO PER SUBDIVISION SPECS.
 - STUCCO TRIM (RE: STUCCO SCHEDULE FOR DETAILS)
 - STONE SURROUND
 - CEDAR BRACKET RE: DETAIL B/7.02 FOR FRAMING
 -
 -
 -

BRICK and STONE LINTEL SCHEDULE

	SPAN	36" HIGH	48" HIGH	LINTEL SIZE	WINDOW ABOVE
*BRICK	Up to 6'-0"	---	---	L3 1/2 x 3 1/2 x 1/4	---
	Up to 8'-3"	---	---	L5 x 3 1/2 x 3/8	---
	Up to 9'-3"	---	---	L6 x 4 x 3/8	L7 x 4 x 3/8
	Up to 16'-3"	L7 x 4 x 3/8	L8 x 4 x 1/2	L8 x 4 x 1/2	**per Design
*STONE	Up to 6'-0"	---	---	L4 x 3 1/2 x 1/4	---
	Up to 8'-3"	---	---	L5 x 3 1/2 x 3/8	---
	Up to 9'-3"	---	L6 x 4 x 3/8	L7 x 4 x 3/8	**per Design
	Up to 16'-3"	---	L8 x 4 x 1/2	**per Design	**per Design

All Lintels: 4" Minimum bearing required each end
 * Brick is based on 40psf and Stone is based on 60psf
 ** Any lintels not described by the above parameters shall be specifically designed.

Contract Revisions: (#, Date, By, Description)

Subdivision:	RETREAT @ AUGUSTA PINES	Sheet No.	6.01
Job #:	RAP-0019-1		
Customer Name:	MODEL		
Job Address:	24806 PACIFIC DUNES LANE		



DREES CUSTOM HOMES L.P.
 6225 STATE HIGHWAY 161, SUITE 400, IRVING, TX. 75038
 (972) 953-4500
 Copyright © 2015, (2015) The Drees Company. All Rights Reserved. No portion of this material may be reproduced in any form or by any means, including photocopying, without the express written permission of the Drees Company. The Drees Company will vigorously prosecute any unauthorized use of this material.

House: **LINLEY**
 Series: SERIES_NM
 Plan No.: 7010

Std. Drawn By: BTW
 Std. Chk. By: ARC
 Std. Date: 2-24-15
 Date of Last Rev: REV_DATE

Sheet Description: **FRONT & REAR ELEVATIONS ELEVATION "A"**

SCALE: 1/8" = 1'-0"

Contract Drawn By: **BLAKE W.**
 Phone #: 859-578-4319
 Coordinator's Name: **KRISTI B.**
 Coordinator's Phone #: 859-578-4338

Original Site Specific Dwg. & Effective Change Order Date:
2/24/14

RAP-0019-1.dwg Feb 24, 2015 - 4:08pm