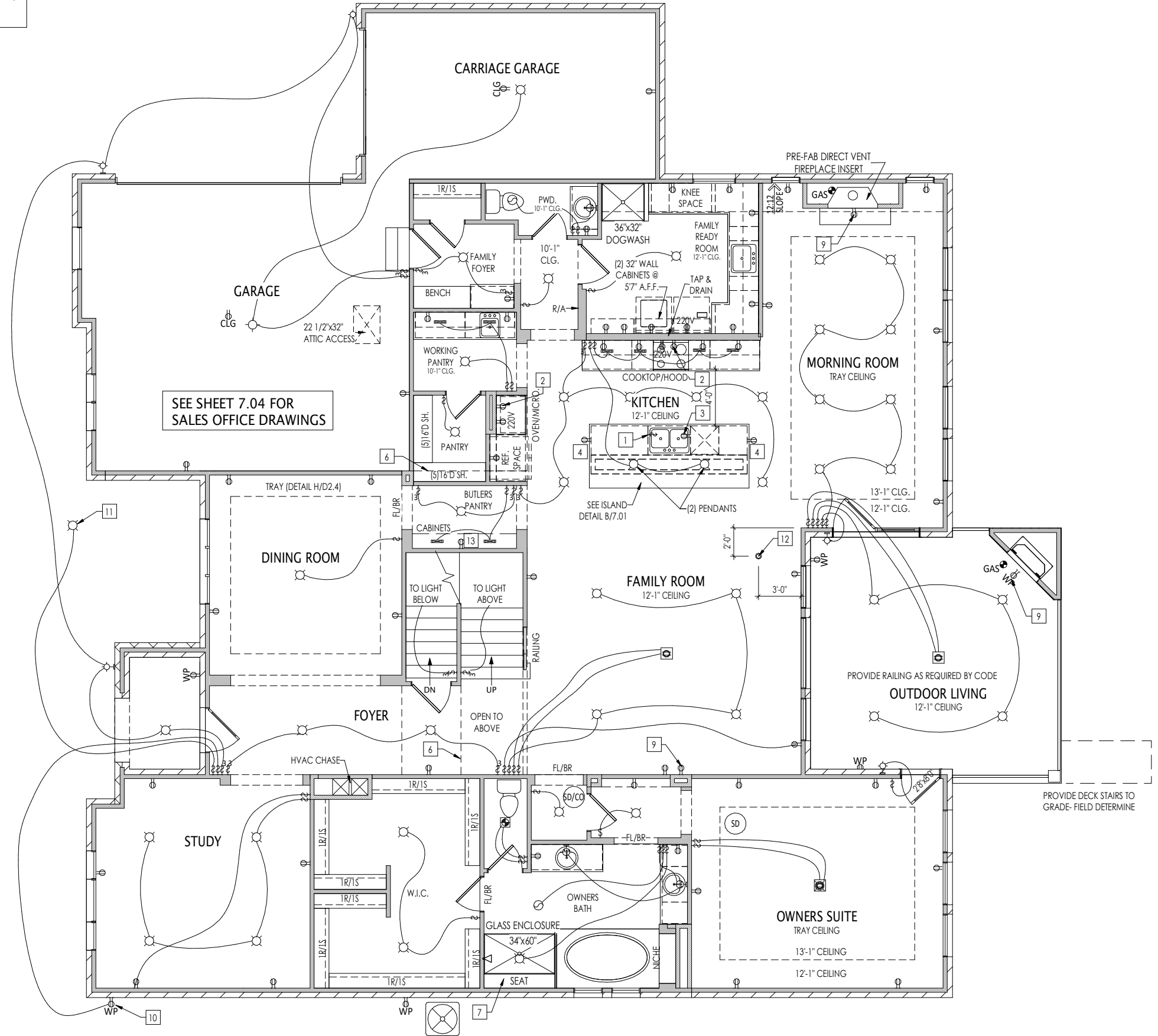




PROVIDE 8' TALL DOORS  
THROUGHOUT FIRST FLOOR,  
U.N.O.



SEE SHEET 7.04 FOR  
SALES OFFICE DRAWINGS

- General Notes:**
1. REFER TO SHEET ON.1 FOR GENERAL NOTES.
- Key Notes:**
- 1 DISPOSAL SWITCH IN SINK CABINET
  - 2 OUTLET FOR RANGE HOOD/MICROWAVE HELD HIGH- VENT TO EXTERIOR
  - 3 OUTLET FOR DISHWASHER LOCATED IN SINK CABINET
  - 4 HOLD OUTLET HIGH ON ISLAND
  - 5 -
  - 6 OUTLINE OF SECOND FLOOR ABOVE
  - 7 TILED SHOWER SEAT SLOPED 3/4" FOR WATER RUN-OFF OVER FLEXIBLE CHLORINATED POLYETHYLENE WATERPROOF MEMBRANE (CONTINUE OVER FRONT AND BACK OF SEAT)
  - 8 -
  - 9 OUTLET HELD HIGH FOR FUTURE TV
  - 10 LANDSCAPING PRE WIRE SWITCHED CIRCUIT ON A 20 AMP GFI
  - 11 POST LAMP WITH PHOTOCCELL AND SWITCH- FIELD DETERMINE LOCATION
  - 12 FLOOR OUTLET- ADJUST LOCATION AS NEEDED TO AVOID INTERFERING WITH FLOOR JOISTS
  - 13 PROVIDE (2) PUCK LIGHTS IN CABINETS
  - 14 -
  - 15 -

**MECHANICAL LEGEND**

◀ PHONE JACK	○ FLUORESCENT LIGHT
⊕ WALL OUTLET	— UNDER CABINET LIGHTING
⊕ WEATHERPROOF OUTLET	○ CLG. MOUNTED LIGHT FIXT.
⊕ 220 VOLT OUTLET	○ WALL MOUNTED LIGHT FIXT.
⊕ GROUND FAULT OUTLET	○ RECESSED CEILING LIGHT
⊕ FLOOR OUTLET	○ DOUBLE SPOTLIGHT FIXT.
⊕ CABLE TELEVISION JACK	○ DIRECTIONAL CAN LIGHT
⊕ SINGLE POLE SWITCH	○ PIN LIGHT
⊕ 3-WAY SWITCH	⊕ WALL SCONCE @ 5'-6" A.F.F.
⊕ 4-WAY SWITCH	⊕ STAIR LIGHT
⊕ BLOCK, MOUNT, & SWITCH FOR FUTURE FAN/LIGHT COMBINATION (CENTER, UNLESS OTHERWISE NOTED)	⊕ HOSE BIB
⊕ EXHAUST FAN AND LIGHT COMBINATION	⊕ SHOWER HEAD
⊕ CLG. MTD. EXHAUST FAN	⊕ GAS HOOK UP
⊕ WALL MTD. EXHAUST FAN	⊕ FLOOR DRAIN
	⊕ SMOKE DETECTOR
	⊕ CO DETECTOR
	⊕ SMOKE DETECTOR/ CO DETECTOR COMBINATION

RESIDENCE FOR:  
**MODEL**  
TBD  
**CROOKED TREE PRESERVE**

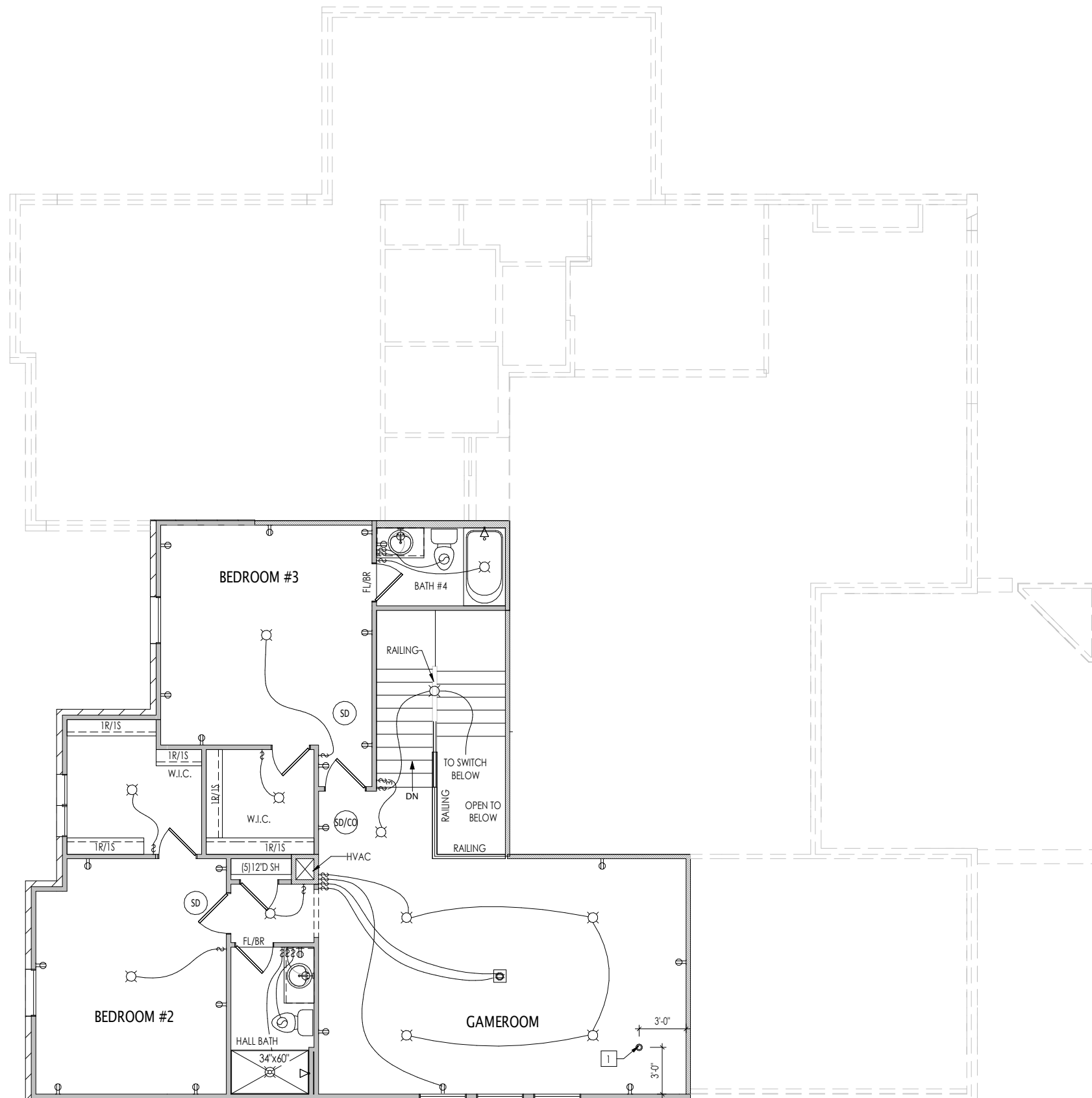
Job Number: <b>CKT-0148-00</b>	Drawing Date: <b>11/4/19</b>	Coord Name: <b>M. HYATT</b>	Coord Phone: <b>859.578.4290</b>
House Name:		Drawing Scale: 1/8" = 1'0"	Drawn By: <b>LJR</b>
<b>the CRESTWOOD</b>			Series: <b>SERIES III</b>
			Plan No.: <b>PLAN_NM</b>

**Drees HOMES**  
SM

Copyright © 2019, (2019) The Drees Company. All Rights Reserved.  
211 Grandview Drive, Fort Mitchell, KY 41017  
Phone: (859) 578-4200

Sheet Information

**4.01**  
First Floor Mechanical Plan  
Elevation "D"



**General Notes:**  
 1. REFER TO SHEET ON.1 FOR GENERAL NOTES.

**Key Notes:**

1	FLOOR OUTLET- ADJUST LOCATION AS NEEDED TO AVOID INTERFERING WITH FLOOR JOISTS
2	-
3	-
4	-
5	-
6	-
7	-
8	-
9	-
10	-
11	-
12	-
13	-
14	-
15	-

**MECHANICAL LEGEND**

◀ PHONE JACK	○ FLUORESCENT LIGHT
⊕ WALL OUTLET	⎓ UNDER CABINET LIGHTING
⊕ WEATHERPROOF OUTLET	⊕ CLG. MOUNTED LIGHT FIXT.
⊕ 220 VOLT OUTLET	⊕ WALL MOUNTED LIGHT FIXT.
⊕ GROUND FAULT OUTLET	⊕ RECESSED CEILING LIGHT
⊕ FLOOR OUTLET	⊕ DOUBLE SPOTLIGHT FIXT.
⊕ CABLE TELEVISION JACK	⊕ DIRECTIONAL CAN LIGHT
⊕ SINGLE POLE SWITCH	⊕ PIN LIGHT
⊕ 3-WAY SWITCH	⊕ WALL SCONCE @ 5'-6" A.F.F.
⊕ 4-WAY SWITCH	⊕ STAIR LIGHT
⊕ BLOCK, MOUNT, & SWITCH FOR FUTURE FAN/LIGHT COMBINATION (CENTER, UNLESS OTHERWISE NOTED)	⊕ HOSE BIB
⊕ EXHAUST FAN AND LIGHT COMBINATION	⊕ SHOWER HEAD
⊕ CLG. MTD. EXHAUST FAN	⊕ GAS HOOK UP
⊕ WALL MTD. EXHAUST FAN	⊕ FLOOR DRAIN
	⊕ SMOKE DETECTOR
	⊕ CO DETECTOR
	⊕ SMOKE DETECTOR/ CO DETECTOR COMBINATION

**RESIDENCE FOR:**  
**MODEL**  
 TBD  
**CROOKED TREE PRESERVE**

Job Number: <b>CKT-0148-00</b>	Drawing Date: <b>11/4/19</b>	Coord Name: <b>M. HYATT</b>	Coord Phone: <b>859.578.4290</b>
House Name:		Drawing Scale: 1/8" = 1'0"	Drawn By: <b>LJR</b>
<b>the CRESTWOOD</b>			Series: <b>SERIES III</b>
			Plan No.: <b>PLAN_NM</b>

<p><small>Copyright © 2019, (2019) The Drees Company. All Rights Reserved.        211 Grandview Drive, Fort Mitchell, KY 41017        Phone: (859) 578-4200</small></p>	<p>Sheet Information</p>	<p><b>4.02</b>        Second Floor Mechanical Plan        Elevation "D"</p>
---	--------------------------	---

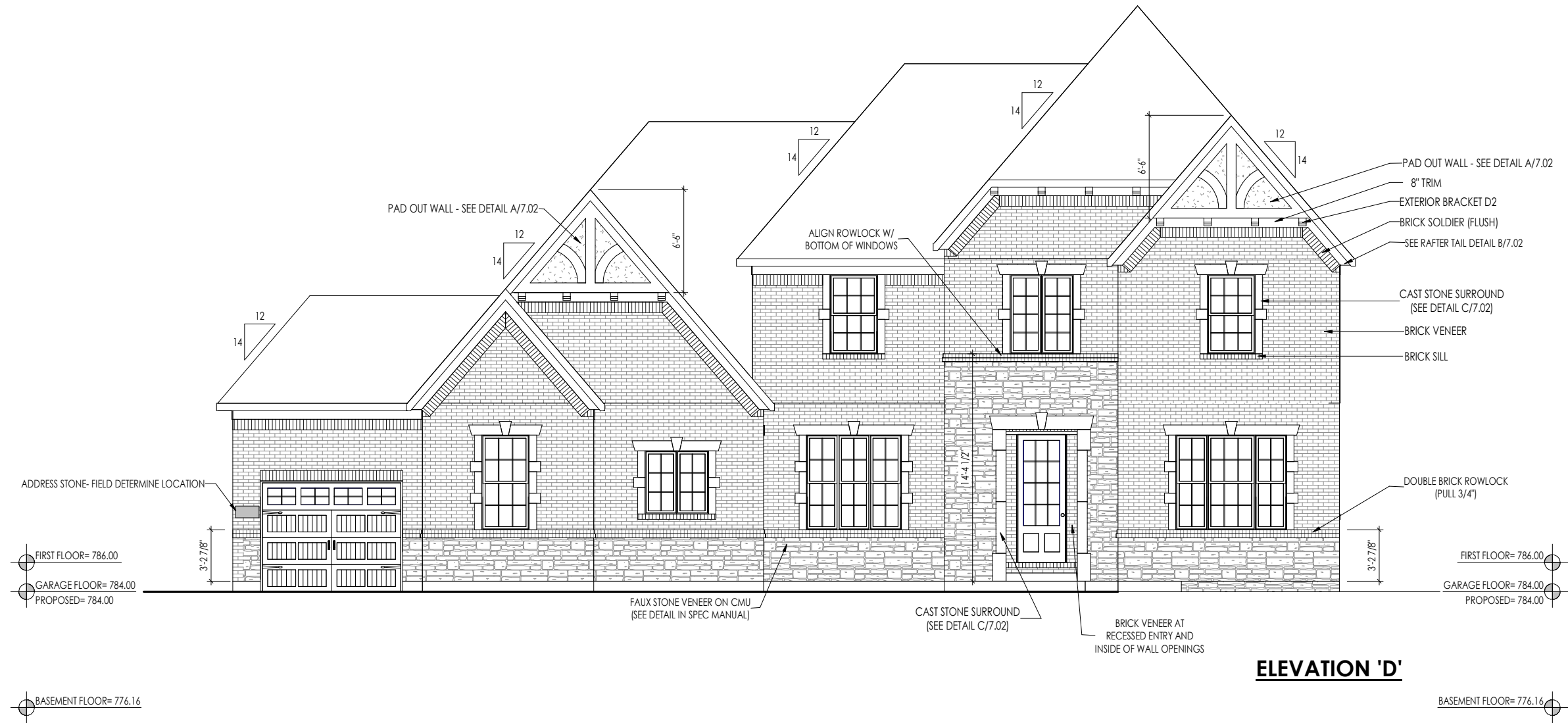
<b>TYPICAL TRIM:</b>
<b>6" FASCIA</b> (ALL SIDES)
<b>8" FRIEZE</b> (FRONT ONLY, UNLESS OTHERWISE NOTED)

**General Notes:**

- REFER TO SHEET ON.1 FOR GENERAL NOTES.
- ROOFING MATERIAL PER SELECTIONS.

**Key Notes:**

- 
- 
- 
- 
- 
- 
- 
- 
- 
- 



**ELEVATION 'D'**

Space for Architect Seal

BRICK and STONE LINTEL SCHEDULE					
	SPAN	36" HIGH	48" HIGH	LINTEL SIZE	WINDOW ABOVE
*BRICK	Up to 6'-0"	---	---	L3 1/2 x 3 1/2 x 1/4	---
	Up to 8'-3"	---	---	L5 x 3 1/2 x 5/16	---
	Up to 9'-3"	---	---	L6 x 4 x 5/16	L7 x 4 x 3/8
	Up to 16'-3"	L7 x 4 x 3/8	L8 x 4 x 1/2	L8 x 4 x 1/2	**per Design
*STONE	Up to 6'-0"	---	---	L4 x 3 1/2 x 1/4	---
	Up to 8'-3"	---	---	L5 x 3 1/2 x 5/16	---
	Up to 9'-3"	---	L6 x 4 x 3/8	L7 x 4 x 3/8	**per Design
	Up to 16'-3"	---	L8 x 4 x 1/2	**per Design	**per Design

All lintels: 4" Minimum bearing required each end  
 \* Brick is based on 40psf and Stone is based on 60psf  
 \*\* Any lintels not described by the above parameters shall be specifically designed.

RESIDENCE FOR:  
**MODEL**  
 TBD  
**CROOKED TREE PRESERVE**

Job Number: <b>CKT-0148-00</b>	Drawing Date: <b>11/4/19</b>	Coord Name: <b>M. HYATT</b>	Coord Phone: <b>859.578.4290</b>
House Name:			Drawing Scale: 1/8" = 1'0"
<b>the CRESTWOOD</b>			Drawn By: <b>LJR</b>
			Series: <b>SERIES III</b>
			Plan No.: <b>PLAN_NM</b>

<p><b>Drees HOMES</b> SM</p> <p><small>Copyright © 2019, (2019) The Drees Company. All Rights Reserved.          211 Grandview Drive, Fort Mitchell, KY 41017          Phone: (859) 578-4200</small></p>	Sheet Information	<b>6.01</b> Front Elevation Elevation "D"