

General Notes:

1. REFER TO SHEET ON.1 FOR GENERAL NOTES.

Key Notes:

- 1 TO LIGHT OR SWITCH ABOVE
- 2 SLOPE WALL WITH STAIR STRINGER
- 3 -
- 4 -
- 5 -
- 6 -
- 7 -
- 8 -
- 9 -
- 10 -

MECHANICAL LEGEND

◀ PHONE JACK	○ FLUORESCENT LIGHT
⊕ WALL OUTLET	▬ UNDER CABINET LIGHTING
⊕ WEATHERPROOF OUTLET	⊗ CLG. MOUNTED LIGHT FIXT.
⊕ 220 VOLT OUTLET	⊕ WALL MOUNTED LIGHT FIXT.
⊕ GROUND FAULT OUTLET	○ SURFACE MOUNT DISC LIGHT OR RECESSED CEILING LIGHT, PER SPECS.
⊕ FLOOR OUTLET	⊕ DOUBLE SPOTLIGHT FIXT.
⊕ CABLE TELEVISION JACK	⊕ DIRECTIONAL CAN LIGHT
⊕ SINGLE POLE SWITCH	⊕ PIN LIGHT
⊕ 3-WAY SWITCH	⊕ WALL SCONCE @ 5'-6" A.F.F.
⊕ 4-WAY SWITCH	⊕ STAIR LIGHT
⊕ BLOCK, MOUNT, & SWITCH FOR FUTURE FAN/LIGHT COMBINATION (CENTER, UNLESS OTHERWISE NOTED)	⊕ HOSE BIB
⊕ EXHAUST FAN AND LIGHT COMBINATION	⊕ SHOWER HEAD
⊕ CLG. MTD. EXHAUST FAN	⊕ GAS HOOK UP
⊕ WALL MTD. EXHAUST FAN	⊕ SMOKE DETECTOR
⊕ FLOOR DRAIN	⊕ CO DETECTOR
	⊕ SMOKE DETECTOR/ CO DETECTOR COMBINATION

RESIDENCE FOR:

MODEL

TBD

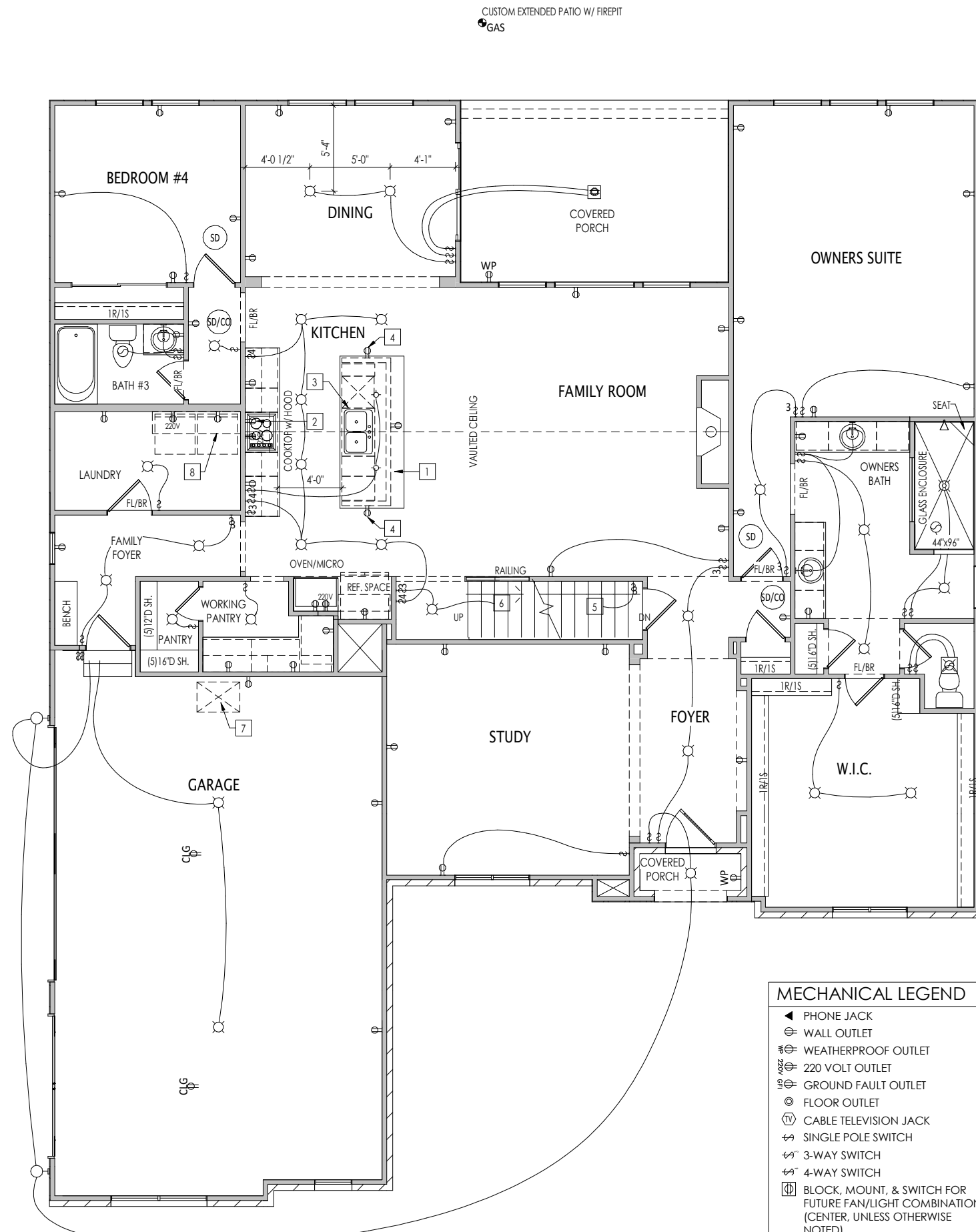
OAKS OF WEST CHESTER

Job Number: OWC-0002-00	Drawing Date: 8/27/19	Coord Name: MELISSA H.	Coord Phone: (859)578-4290
-----------------------------------	---------------------------------	----------------------------------	--------------------------------------

House Name:	Drawing Scale: 1/8" = 1'0"	Drawn By: GS
-------------	----------------------------	------------------------

the BRENNAN	Series: SERIES II
	Plan No.: PLAN_NM

<p>Copyright © 2017, [2017] The Drees Company. All Rights Reserved. 211 GRANDVIEW DRIVE, FORT MITCHELL, KY 41017 PHONE: [859] 578-4200</p>	Sheet Information	1.03
		Lower Level Mechanical Plan Elevation 'D'



CUSTOM EXTENDED PATIO W/ FIREPIT
GAS

General Notes:

1. REFER TO SHEET ON.1 FOR GENERAL NOTES.

Key Notes:

- 1 KITCHEN ISLAND RE: DETAIL B/7.01
- 2 OUTLET FOR RANGE HOOD/MICROWAVE HELD HIGH
- 3 OUTLET FOR DISHWASHER AND SWITCH FOR DISPOSAL LOCATED IN SINK CABINET
- 4 HOLD OUTLET HIGH ON ISLAND
- 5 TO SWITCH OR LIGHT BELOW
- 6 TO SWITCH OR LIGHT ABOVE
- 7 22-1/2" x 32" ATTIC ACCESS
- 8 5'6" SHELF @ 57" A.F.F.
- 9 -
- 10 -
- 11 -
- 12 -
- 13 -
- 14 -
- 15 -

MECHANICAL LEGEND

◀ PHONE JACK	○ FLUORESCENT LIGHT
⊕ WALL OUTLET	— UNDER CABINET LIGHTING
⊕ WEATHERPROOF OUTLET	⊗ CLG. MOUNTED LIGHT FIXT.
⊕ 220 VOLT OUTLET	○ WALL MOUNTED LIGHT FIXT.
⊕ GROUND FAULT OUTLET	○ SURFACE MOUNT DISC LIGHT OR RECESSED CEILING LIGHT, PER SPECS.
⊕ FLOOR OUTLET	⊗ DOUBLE SPOTLIGHT FIXT.
⊕ CABLE TELEVISION JACK	⊗ DIRECTIONAL CAN LIGHT
⊕ SINGLE POLE SWITCH	○ PIN LIGHT
⊕ 3-WAY SWITCH	⊕ WALL SCONCE @ 5'-6" A.F.F.
⊕ 4-WAY SWITCH	⊕ STAIR LIGHT
⊕ BLOCK, MOUNT, & SWITCH FOR FUTURE FAN/LIGHT COMBINATION (CENTER, UNLESS OTHERWISE NOTED)	⊕ HOSE BIB
⊕ EXHAUST FAN AND LIGHT COMBINATION	⊕ SHOWER HEAD
⊕ CLG. MTD. EXHAUST FAN	⊕ GAS HOOK UP
⊕ WALL MTD. EXHAUST FAN	⊕ SMOKE DETECTOR
⊕ FLOOR DRAIN	⊕ CO DETECTOR
	⊕ SMOKE DETECTOR/ CO DETECTOR COMBINATION

RESIDENCE FOR:

MODEL
TBD
OAKS OF WEST CHESTER

Job Number: OWC-0002-00	Drawing Date: 8/27/19	Coord Name: MELISSA H.	Coord Phone: (859)578-4290
-----------------------------------	---------------------------------	----------------------------------	--------------------------------------

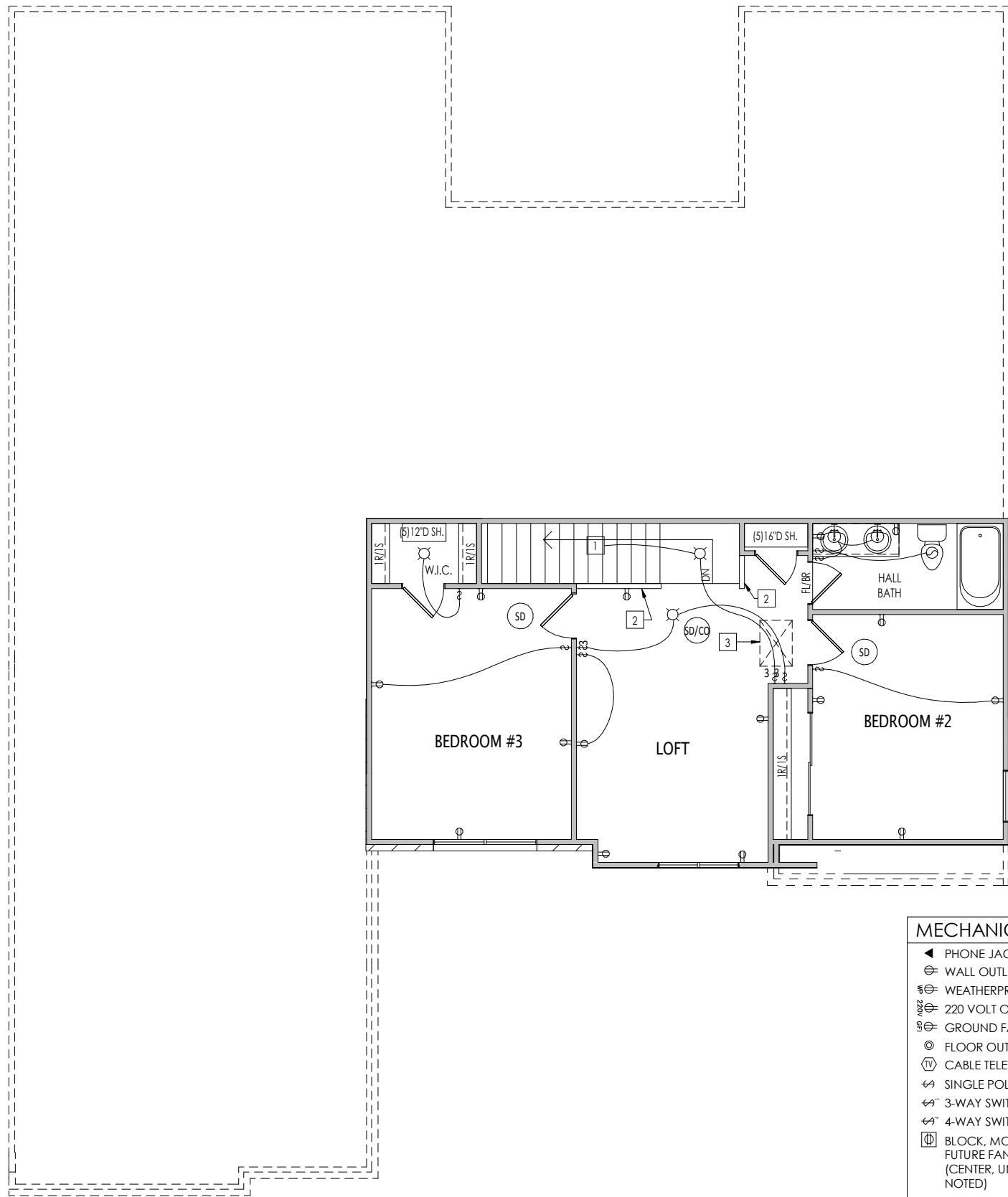
House Name:	Drawing Scale: 1/8" = 1'0"	Drawn By: GS
-------------	----------------------------	------------------------

the BRENNAN	Series: SERIES II
	Plan No.: PLAN_NM

Copyright © 2017, [2017] The Drees Company. All Rights Reserved.
211 GRANDVIEW DRIVE, FORT MITCHELL, KY 41017
PHONE: [859] 578-4200

4.01
First Floor Mechanical Plan
Elevation 'D'

Sheet Information



General Notes:
 1. REFER TO SHEET ON.1 FOR GENERAL NOTES.

- Key Notes:**
- 1 TO LIGHT OR SWITCH BELOW
 - 2 36" HIGH WALL
 - 3 22-1/2"x32" ATTIC ACCESS
 - 4 -
 - 5 -
 - 6 -
 - 7 -
 - 8 -
 - 9 -
 - 10 -

MECHANICAL LEGEND

◀ PHONE JACK	⊕ FLOOR DRAIN	⬭ FLUORESCENT LIGHT
⊕ WALL OUTLET	⊕ CLG. MTD. EXHAUST FAN	⎓ UNDER CABINET LIGHTING
⊕ WEATHERPROOF OUTLET	⊕ WALL MTD. EXHAUST FAN	⊙ CLG. MOUNTED LIGHT FIXT.
⊕ WEATHERPROOF OUTLET	⊕ FLOOR DRAIN	⊙ WALL MOUNTED LIGHT FIXT.
⊕ 220 VOLT OUTLET	⊕ EXHAUST FAN AND LIGHT COMBINATION	⊙ SURFACE MOUNT DISC LIGHT OR RECESSED CEILING LIGHT, PER SPECS.
⊕ GROUND FAULT OUTLET	⊕ CLG. MTD. EXHAUST FAN	⊙ DOUBLE SPOTLIGHT FIXT.
⊕ FLOOR OUTLET	⊕ WALL MTD. EXHAUST FAN	⊙ DIRECTIONAL CAN LIGHT
⊕ CABLE TELEVISION JACK	⊕ FLOOR DRAIN	⊙ PIN LIGHT
⊕ SINGLE POLE SWITCH		⊙ WALL SCONCE @ 5'-6" A.F.F. STAIR LIGHT
⊕ 3-WAY SWITCH		⊕ HOSE BIB
⊕ 4-WAY SWITCH		⊕ SHOWER HEAD
⊕ BLOCK, MOUNT, & SWITCH FOR FUTURE FAN/LIGHT COMBINATION (CENTER, UNLESS OTHERWISE NOTED)		⊕ GAS HOOK UP
⊕ EXHAUST FAN AND LIGHT COMBINATION		⊕ SMOKE DETECTOR
⊕ CLG. MTD. EXHAUST FAN		⊕ CO DETECTOR
⊕ WALL MTD. EXHAUST FAN		⊕ SMOKE DETECTOR/ CO DETECTOR COMBINATION
⊕ FLOOR DRAIN		

RESIDENCE FOR:
MODEL
 TBD
OAKS OF WEST CHESTER

Job Number: OWC-0002-00	Drawing Date: 8/27/19	Coord Name: MELISSA H.	Coord Phone: (859)578-4290
-----------------------------------	---------------------------------	----------------------------------	--------------------------------------

House Name: the BRENNAN	Drawing Scale: 1/8" = 1'0"	Drawn By: GS
Series: SERIES II		Plan No.: PLAN_NM

<p>Copyright © 2017, [2017] The Drees Company. All Rights Reserved. 211 GRANDVIEW DRIVE, FORT MITCHELL, KY 41017 PHONE: [859] 578-4200</p>	<p>Sheet Information</p>	<h1>4.02</h1> <p>Second Floor Mechanical Plan Elevation 'D'</p>
--	--------------------------	--

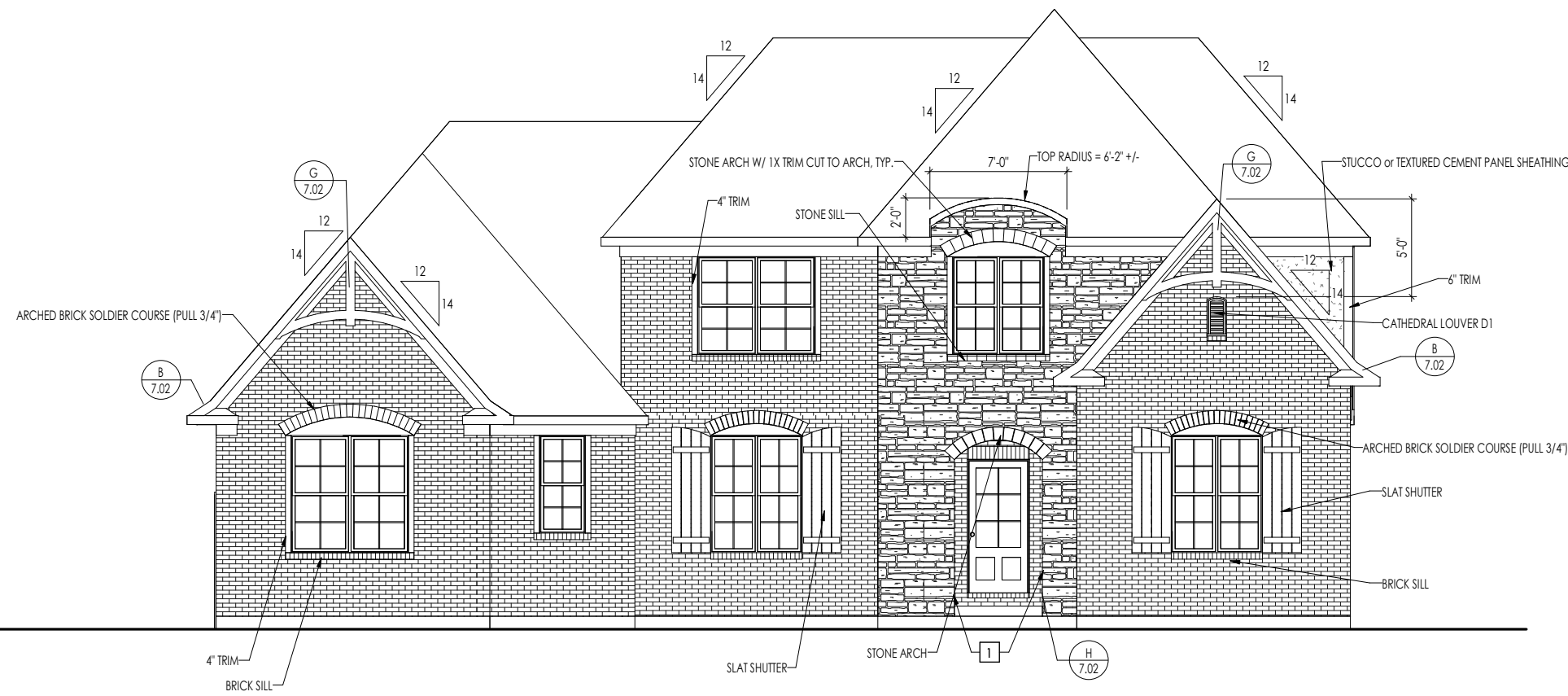
TYPICAL TRIM:
6" FASCIA (ALL SIDES)
8" FRIEZE (FRONT ONLY, UNLESS OTHERWISE NOTED)

General Notes:

- REFER TO SHEET ON.1 FOR GENERAL NOTES.
- ROOFING MATERIAL PER SELECTIONS.

Key Notes:

1	INTERIOR OF PORCH TO BE FINISHED IN BRICK (ALL FACES)
2	--
3	--
4	--
5	--
6	--
7	--
8	--
9	--
10	--



BRICK and STONE LINTEL SCHEDULE

	SPAN	36" HIGH	48" HIGH	LINTEL SIZE	WINDOW ABOVE
*BRICK	Up to 6'-0"	---	---	L3 1/2 x 3 1/2 x 1/4	---
	Up to 8'-3"	---	---	L5 x 3 1/2 x 5/16	---
	Up to 9'-3"	---	---	L6 x 4 x 5/16	L7 x 4 x 3/8
	Up to 16'-3"	L7 x 4 x 3/8	L8 x 4 x 1/2	L8 x 4 x 1/2	**per Design
*STONE	Up to 6'-0"	---	---	L4 x 3 1/2 x 1/4	---
	Up to 8'-3"	---	---	L5 x 3 1/2 x 5/16	---
	Up to 9'-3"	---	L6 x 4 x 3/8	L7 x 4 x 3/8	**per Design
	Up to 16'-3"	---	L8 x 4 x 1/2	**per Design	**per Design

All Lintels: 4" Minimum bearing required each end
 * Brick is based on 40psf and Stone is based on 60psf
 ** Any lintels not described by the above parameters shall be specifically designed.

RESIDENCE FOR:
MODEL
 TBD
OAKS OF WEST CHESTER

Job Number: OWC-0002-00	Drawing Date: 8/27/19	Coord Name: MELISSA H.	Coord Phone: (859)578-4290
-----------------------------------	---------------------------------	----------------------------------	--------------------------------------

House Name: the BRENNAN	Drawing Scale: 1/8" = 1'0"	Drawn By: GS
Series: SERIES II		Plan No.: PLAN_NM

<p>Copyright © 2017, [2017] The Drees Company. All Rights Reserved. 211 GRANDVIEW DRIVE, FORT MITCHELL, KY 41017 PHONE: [859] 578-4200</p>	<p>Sheet Information</p>	<p>6.01</p> <p>Front Elevation Elevation 'D'</p>
--	--------------------------	---