

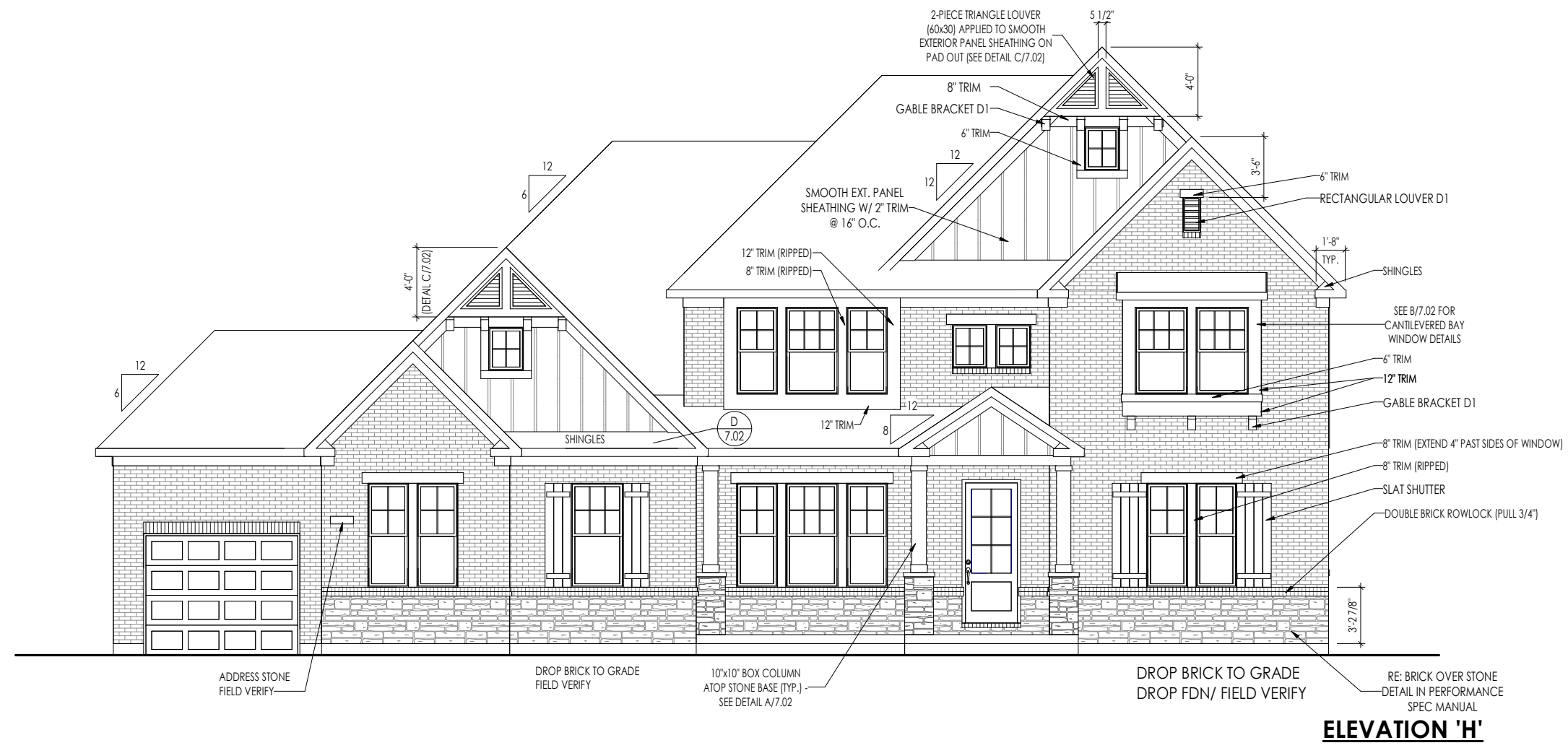
TYPICAL TRIM:
6" (ALL SIDES)
8" (FRONT ONLY, UNLESS OTHERWISE NOTED)

- General Notes:
1. REFER TO SHEET ON.1 FOR GENERAL NOTES.
 2. ROOFING MATERIAL PER SELECTIONS.
 3. WRAP ALL FRIEZE AND FASCIA TRIM BOARDS IN ALUMINUM
 4. PAD OUT GABLE ENDS (WITHOUT GABLE EXTENSIONS) W/ (2) 1X3s PLACED SIDE BY SIDE W. THE 1X8 OVER THE TOP TO COVER THE ENDS OF SIDING.

- Key Notes:
- 1 -
 - 2 -
 - 3 -
 - 4 -

BRICK and STONE LINTEL SCHEDULE					
	SPAN	36" HIGH	48" HIGH	LINTEL SIZE	WINDOW ABOVE
*BRICK	Up to 6'-0"	---	---	L3 1/2 x 3 1/2 x 1/4	---
	Up to 8'-3"	---	---	L5 x 3 1/2 x 5/16	---
	Up to 9'-3"	---	---	L6 x 4 x 5/16	L7 x 4 x 3/8
	Up to 16'-3"	L7 x 4 x 3/8	L8 x 4 x 1/2	L8 x 4 x 1/2	**per Design
*STONE	Up to 6'-0"	---	---	L4 x 3 1/2 x 1/4	---
	Up to 8'-3"	---	---	L5 x 3 1/2 x 5/16	---
	Up to 9'-3"	---	L6 x 4 x 3/8	L7 x 4 x 3/8	**per Design
	Up to 16'-3"	---	L8 x 4 x 1/2	**per Design	**per Design

All lintels: 4" Minimum bearing required each end
 * Brick is based on 40psf and Stone is based on 60psf
 ** Any lintels not described by the above parameters shall be specifically designed.

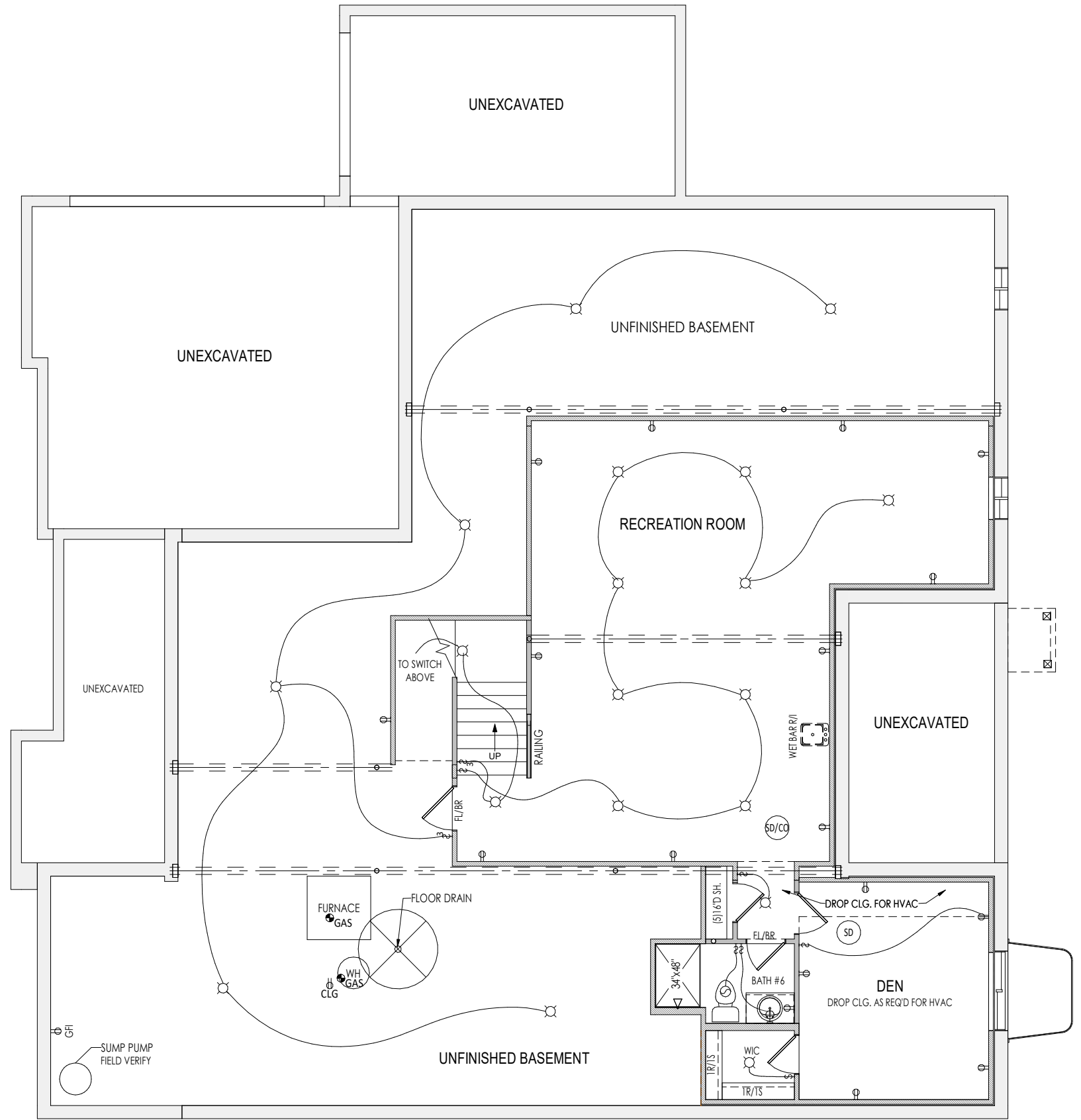


Space for Architect Seal

RESIDENCE FOR:
MARKET
 5570 SENTINEL OAK DRIVE
 CROOKED TREE PRESERVE

Job Number: CKT-0056-00	Drawing Date: 06/17/21	Coord Name: MPH	Coord Phone: 859.578.4290
House Name: the CRESTWOOD			Contract Drawn By: JED
Born on Date: 04/08/2016			CDs Drawn By: BLC
Series: SERIES_III			Plan No.: PLAN_NM

<p>Drees HOMES SM</p> <p><small>Copyright © 2016 (2021) The Drees Company. All Rights Reserved. 900 East 96th Street, Suite 100, Indianapolis, IN 46240 Phone: [317] 347-7300</small></p>	Sheet Information	6.01
		Front Elevation Elevation "H"



General Notes:

1. REFER TO SHEET ON.1 FOR GENERAL NOTES.
2. HANDRAILS SHALL BE INSTALLED ON ALL STAIRS WITH 3 OR MORE RISERS, HANDRAIL HEIGHTS SHALL BE A MINIMUM OF 34" AND MAXIMUM OF 38".
3. ARC FAULT CIRCUIT OUTLET TO BE INSTALLED PER NEC 2017, SECT. 210.12.

Key Notes:

- 1
- 2
- 3
- 4
- 5 -
- 6 -
- 7 -
- 8 -
- 9 -
- 10 -

MECHANICAL LEGEND

◀ PHONE JACK	○ CLG. MOUNTED LIGHT FIXT.	■ STAIR LIGHT
⊖ WALL OUTLET	○ SURFACE MOUNT DISC LIGHT OR RECESSED CEILING LIGHT, PER SPECS.	+ HOSE BIB
⊖ WEATHERPROOF GFCI OUTLET	○ WALL MOUNTED LIGHT FIXT.	△ SHOWER HEAD
⊖ 220 VOLT OUTLET	⊖ DOUBLE SPOTLIGHT FIXT.	⊖ GAS GAS HOOK UP
⊖ GFCI OUTLET	⊖ DIRECTIONAL CAN LIGHT	⊖ FLOOR DRAIN
⊖ FLOOR OUTLET	⊖ PIN LIGHT	⊖ SMOKE DETECTOR
⊖ CABLE TELEVISION JACK	⊖ WALL SCONCE @ 5'-6" A.F.F.	⊖ CO DETECTOR
⊖ SINGLE POLE SWITCH	⊖ FLUORESCENT LIGHT	⊖ SMOKE DETECTOR/CO DETECTOR COMBINATION
⊖ 3-WAY SWITCH	⊖ UNDER CABINET LIGHTING	⊖ EXHAUST FAN AND LIGHT COMBINATION
⊖ 4-WAY SWITCH	⊖ BLOCK, MOUNT, & SWITCH FOR FUTURE FAN/LIGHT COMBINATION (CENTER, UNLESS OTHERWISE NOTED)	⊖ CLG. MTD. EXHAUST FAN

Space for Architect Seal

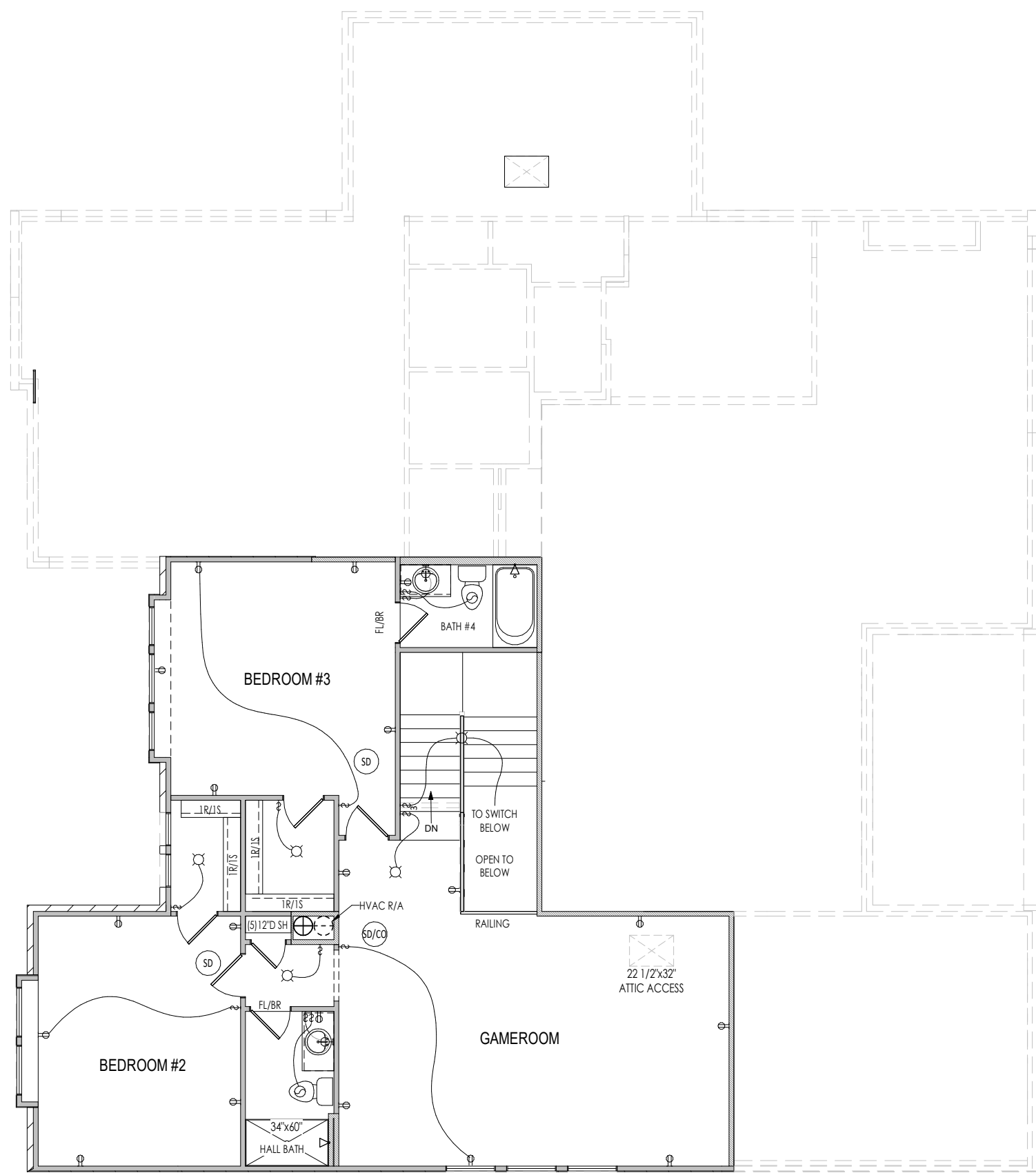
RESIDENCE FOR:
MARKET
5570 SENTINEL OAK DRIVE
CROOKED TREE PRESERVE

Job Number: CKT-0056-00	Drawing Date: 06/17/21	Coord Name: MPH	Coord Phone: 859.578.4290
House Name: the CRESTWOOD		Drawing Scale: 1/8" = 1'0"	
Contract Drawn By: JED		Series: SERIES_III	
Born on Date: 04/08/2016		CDs Drawn By: BLC	
Plan No.: PLAN_NM			



Copyright © 2016 (2021) The Drees Company. All Rights Reserved.
900 East 96th Street, Suite 100, Indianapolis, IN 46240
Phone: [317] 347-7300

1.03
Lower Level Mechanical Plan
Elevation "H"



General Notes:

- REFER TO SHEET ON.1 FOR GENERAL NOTES.
- HANDRAILS SHALL BE INSTALLED ON ALL STAIRS WITH 3 OR MORE RISERS, HANDRAIL HEIGHTS SHALL BE A MINIMUM OF 34" AND MAXIMUM OF 38".
- ARC FAULT CIRCUIT OUTLET TO BE INSTALLED PER NEC 2017, SECT. 210.12.

Key Notes:

1	-
2	-
3	-
4	-
5	-
6	-
7	-
8	-
9	-
10	-

MECHANICAL LEGEND

◀ PHONE JACK	○ CLG. MOUNTED LIGHT FIXT.	■ STAIR LIGHT
⊖ WALL OUTLET	○ SURFACE MOUNT DISC LIGHT OR RECESSED CEILING LIGHT, PER SPECS.	+ HOSE BIB
⊖ WEATHERPROOF GFCI OUTLET	○ WALL MOUNTED LIGHT FIXT.	△ SHOWER HEAD
⊖ 220 VOLT OUTLET	⊖ DOUBLE SPOTLIGHT FIXT.	⊖ GAS GAS HOOK UP
⊖ GFCI OUTLET	⊖ DIRECTIONAL CAN LIGHT	⊖ FLOOR DRAIN
⊖ FLOOR OUTLET	⊖ PIN LIGHT	⊖ SMOKE DETECTOR
⊖ CABLE TELEVISION JACK	⊖ WALL SCONCE @ 5'-6" A.F.F.	⊖ CO DETECTOR
⊖ SINGLE POLE SWITCH	⊖ FLUORESCENT LIGHT	⊖ SMOKE DETECTOR/CO DETECTOR COMBINATION
⊖ 3-WAY SWITCH	⊖ UNDER CABINET LIGHTING	⊖ EXHAUST FAN AND LIGHT COMBINATION
⊖ 4-WAY SWITCH	⊖ BLOCK, MOUNT, & SWITCH FOR FUTURE FAN/LIGHT COMBINATION (CENTER, UNLESS OTHERWISE NOTED)	⊖ CLG. MTD. EXHAUST FAN

Space for Architect Seal

RESIDENCE FOR:
MARKET
5570 SENTINEL OAK DRIVE
CROOKED TREE PRESERVE

Job Number: CKT-0056-00	Drawing Date: 06/17/21	Coord Name: MPH	Coord Phone: 859.578.4290
House Name: the CRESTWOOD		Drawing Scale: 1/8" = 1'0"	
		Contract Drawn By: JED	
		Series: SERIES_III	
Born on Date: 04/08/2016		CDs Drawn By: BLC	
		Plan No.: PLAN_NM	

<p>Copyright © 2016 (2021) The Drees Company. All Rights Reserved. 900 East 96th Street, Suite 100, Indianapolis, IN 46240 Phone: [317] 347-7300</p>	Sheet Information	4.02
		Second Floor Mechanical Plan Elevation "H"