

SCALE: 1"=20'



DREES CUSTOM HOMES L.P.  
6225 N. STATE HIGHWAY 161, SUITE 400, IRVING, TX 75038 (972) 953-4300

**SUBDIVISION NOTES**

**LEGEND**

- 5' WIDE MAT
- TRASH
- SILT FENCE

**CUSTOMER AGREEMENT**

I UNDERSTAND THAT MY NEW DREES HOME WILL BE BUILT IN GENERAL CONFORMANCE TO THE PLANS, SPECIFICATIONS, SELECTIONS AND THE PURCHASE AGREEMENT, ALL OF WHICH I HAVE REVIEWED AND APPROVED. THIS SET OF PLANS MAY NOT REFLECT THE ELEVATIONS OR OPTIONS FOR MY HOUSE. DREES DRAWS THE STANDARD PLANS COMPLETE WITH THE MOST COMMON OPTIONS. THE SUBCONTRACTORS' SETS WILL SHOW THE OPTIONS I SELECTED IN MY SELECTION SHEETS.

I HAVE REVIEWED THE PLOT PLAN FOR MY HOUSE AND UNDERSTAND THAT THERE MAY BE SOME FIELD ADJUSTMENTS AS TO THE EXACT LOCATION OF THE HOUSE ON THE LOT.

I FURTHER UNDERSTAND THAT MY HOME WILL NOT BE BUILT EXACTLY LIKE ANY OTHER DREES HOME OR MODEL AND THAT SOME MINOR VARIATION FROM MY PLANS AND SPECIFICATIONS MAY OCCUR SINCE EVERY HOME THAT IS BUILT HAS IT'S OWN SET OF UNIQUE CONSTRUCTION PROBLEMS THAT MUST BE DEALT WITH AS THE HOME IS BEING BUILT.

DATE: \_\_\_\_\_ BUILDER: \_\_\_\_\_  
(PLEASE PRINT)

CUSTOMER: \_\_\_\_\_ CUSTOMER: \_\_\_\_\_

**DESCRIPTION**

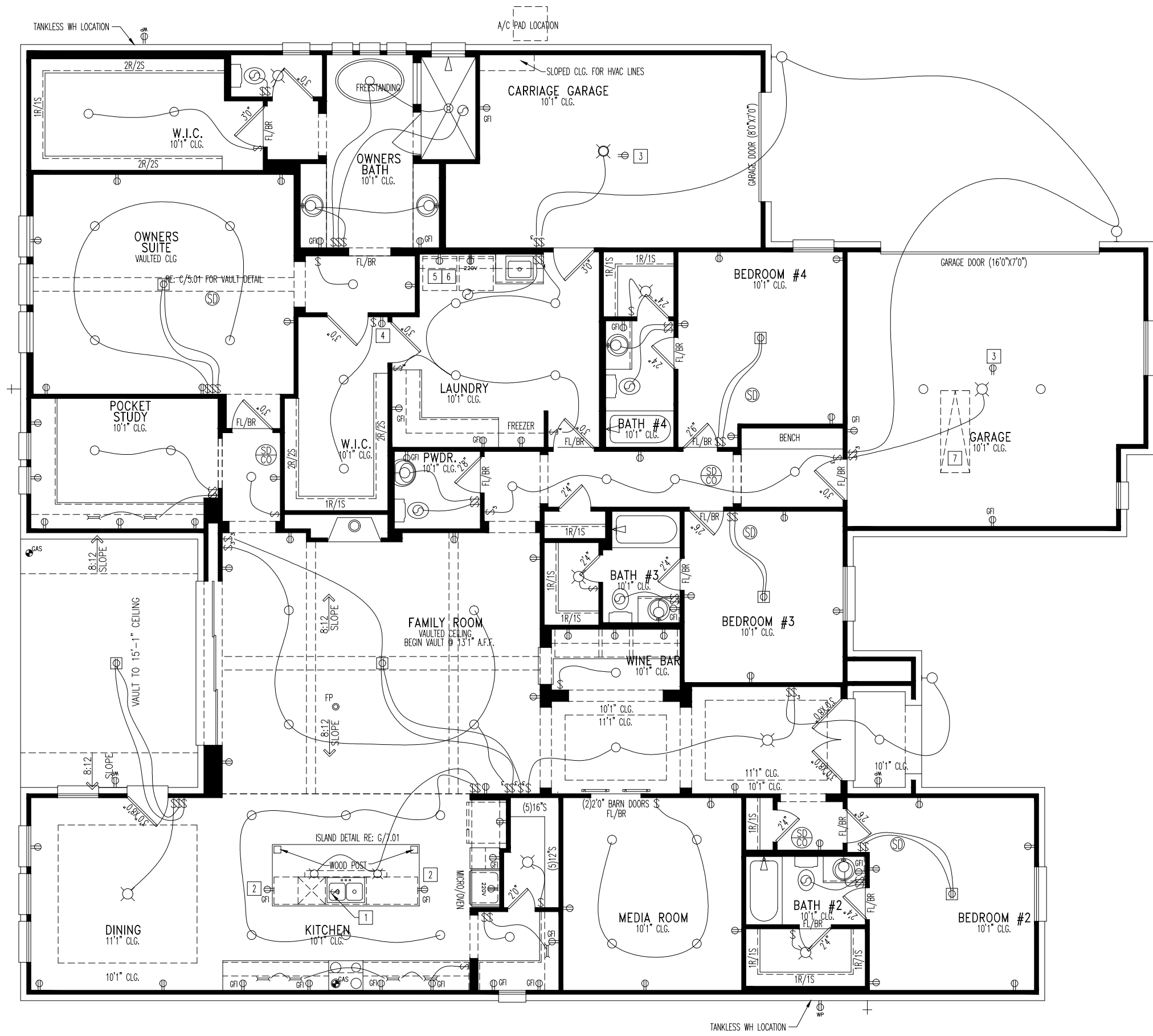
CANYON FALLS  
VILLAGE 5  
NORTH LAKE, TEXAS

CONTRACT REVISIONS:

RESIDENCE FOR: **MARKET**

CONSTRUCTION ADDRESS: 11416 HICKORY FALLS DRIVE

CONTRACT BY: RTB	SUBDIVISION: CANYON FALLS	SHEET NO.
PHONE NO.: (859)578-4322	JOB #: CNF1-0015-J	OP.1
CONTRACT DATE: 9-16-20		



**General Notes**

1. REFER TO SHEET ON.1 FOR GENERAL NOTES.

- Key Notes**
- 1 DISPOSAL AND SWITCH
  - 2 HOLD OUTLET HIGH ON ISLAND
  - 3 OUTLET IN CEILING
  - 4 OUTLET @ 45° A.F.F.
  - 5 WASHER TO THE LEFT OF THE DRYER
  - 6 12" DEEP CABINETS
  - 7 PULL DOWN STAIRS W/ LIGHT AND OUTLET (25 1/2" x 54" AUSTIN/DALLAS) OR (25-1/2"x54" HOUSTON)
  - 8 --
  - 9 --
  - 10 --

**Mechanical Legend**

<ul style="list-style-type: none"> <li>◀ PHONE JACK</li> <li>◀ HOME OFFICE OUTLET</li> <li>◀ DATA OUTLET</li> <li>◀ PROJECTOR ROUGH-IN</li> <li>◀ ENTERTAINMENT CENTER OUTLET</li> <li>◀ WALL OUTLET</li> <li>◀ WEATHERPROOF OUTLET</li> <li>◀ 220 OUTLET</li> <li>◀ GROUND FAULT OUTLET</li> <li>◀ FLOOR OUTLET</li> <li>◀ CABLE TELEVISION JACK</li> <li>◀ SINGLE POLE SWITCH</li> <li>◀ 3-WAY SWITCH</li> <li>◀ 4-WAY SWITCH</li> <li>◀ BLOCK, MOUNT, &amp; SWITCH FOR FUTURE FAN/LIGHT COMBINATION (CENTER, UNLESS OTHERWISE NOTED)</li> <li>◀ EXHAUST FAN AND LIGHT COMBINATION</li> <li>◀ FLOOR DRAIN</li> </ul>	<ul style="list-style-type: none"> <li>○ FLUORESCENT LIGHT</li> <li>○ UNDER CABINET LIGHTING</li> <li>○ CLG. MOUNTED LIGHT FIXT.</li> <li>○ WALL MOUNTED LIGHT FIXT.</li> <li>○ SURFACE MOUNT DISC LIGHT OR RECESSED CEILING LIGHT PER SPECS.</li> <li>○ WALL OUTLET</li> <li>○ DOUBLE SPOTLIGHT FIXT.</li> <li>○ DIRECTIONAL CAN LIGHT</li> <li>○ PIN LIGHT</li> <li>○ WALL SCONCE @ 5'-6" A.F.F.</li> <li>○ STAIR LIGHT</li> <li>○ CLG. MTD. EXHAUST FAN</li> <li>○ WALL MTD. EXHAUST FAN</li> <li>○ SMOKE DETECTOR</li> <li>○ HOSE BIB</li> <li>○ SHOWER HEAD</li> <li>○ GAS HOOK UP</li> <li>○ CO DETECTOR</li> <li>○ SMOKE DETECTOR/ CO DETECTOR COMBINATION</li> </ul>
------------------------------------------------------------------------------------------------------------------------------------------------------------------------------------------------------------------------------------------------------------------------------------------------------------------------------------------------------------------------------------------------------------------------------------------------------------------------------------------------------------------------------------------------------------------------------------------------------------------------	------------------------------------------------------------------------------------------------------------------------------------------------------------------------------------------------------------------------------------------------------------------------------------------------------------------------------------------------------------------------------------------------------------------------------------------------------------------------------------------------------------------------------------------------------------------------------------------------------------------------------------------------------------------------------



DREES CUSTOM HOMES L.P.  
 6225 STATE HIGHWAY 161, SUITE 400, IRVING, TX. 75038  
 (972) 953-4500

Copyright © 2019, (2019) The Drees Company. All Rights Reserved. No portion of this material may be reproduced in any form or by any means, including photocopying, without the express written permission of the Drees Company. The Drees Company will vigorously prosecute any unauthorized use of this material.

House: **ELMSLEY**

Series: SERIES\_NM Plan No.: 2831|5241|7103

Std. Drawn By: KMB Sheet Description: SCALE: 1/8" = 1'-0"

Std. Chk. By: ARC FIRST FLOOR MECHANICAL PLAN ELEVATION "A"

Std. Date: STD\_DATE Date of Last Rev: REV\_DATE

Contract Drawn By: **RTB**

Phone #: \_\_\_\_\_

Coordinator's Name: **LISA CAHILL**

Coordinator's Phone #: **859.578.4322**

CNF1-0015-L.dwg Sep 16, 2020 - 12:59pm

Original Site Specific Dwg. & Effective Change Order Date: **9-16-20**

Subdivision: **CANYON FALLS** Sheet No. **4.01**

Job #: **CNF1-0015-J**

Customer Name: **MARKET**

Job Address: **11416 HICKORY FALLS DRIVE**

**NOTE:**  
6" FASCIA  
4" FRIEZE



**General Notes**

- REFER TO SHEET ON.1 FOR GENERAL NOTES.
- ROOFING MATERIAL PER SPECIFICATIONS

- Key Notes**
- 1 SIDING WILL BE A CEMENTITIOUS TYPE MATERIAL
  - 2
  - 3 SINGLE ROWLOCK
  - 4 SINGLE HEADER COURSE (PULL 3/4")
  - 5
  - 6 --
  - 7 --
  - 8 --
  - 9 --
  - 10 --

**BRICK and STONE LINTEL SCHEDULE**

	SPAN	36" HIGH	48" HIGH	LINTEL SIZE	WINDOW ABOVE
*BRICK	Up to 6'-0"	---	---	L3 1/2 x 3 1/2 x 1/4	---
	Up to 8'-3"	---	---	L5 x 3 1/2 x 5/8	---
	Up to 9'-3"	---	---	L6 x 4 x 5/8	L7 x 4 x 3/8
	Up to 16'-3"	L7 x 4 x 3/8	L8 x 4 x 1/2	L8 x 4 x 1/2	**per Design
*STONE	Up to 6'-0"	---	---	L4 x 3 1/2 x 1/4	---
	Up to 8'-3"	---	---	L5 x 3 1/2 x 5/8	---
	Up to 9'-3"	---	L6 x 4 x 3/8	L7 x 4 x 3/8	**per Design
	Up to 16'-3"	---	L8 x 4 x 1/2	**per Design	**per Design

All Lintels: 4" Minimum bearing required each end  
 \* Brick is based on 40psf and Stone is based on 60psf  
 \*\* Any lintels not described by the above parameters shall be specifically designed.



DREES CUSTOM HOMES L.P.  
 6225 STATE HIGHWAY 161, SUITE 400, IRVING, TX. 75038  
 (972) 953-4500  
 Copyright © 2019, (2019) The Drees Company. All Rights Reserved. No portion of this material may be reproduced in any form or by any means, including photocopying, without the express written permission of the Drees Company. The Drees Company will vigorously prosecute any unauthorized use of this material.

House: **ELMSLEY**  
 Series: SERIES\_NM  
 Plan No.: 2831|5241|7103

Std. Drawn By: KMB  
 Std. Chk. By: ARC  
 Std. Date: STD\_DATE  
 Date of Last Rev: REV\_DATE  
 Sheet Description: FRONT & REAR ELEVATIONS ELEVATION "A"  
 SCALE: 1/8" = 1'-0"

Contract Drawn By: RTR  
 Phone #: \_\_\_\_\_  
 Coordinator's Name: LISA CAHILL  
 Coordinator's Phone #: 859.578.4322  
 CNF1-0015-J.dwg Sep 16, 2020 - 1:07pm

Original Site Specific Dwg. & Effective Change Order Date:  
 9-16-20

Subdivision: CANYON FALLS  
 Job #: CNF1-0015-J  
 Customer Name: MARKET  
 Job Address: 11416 HICKORY FALLS DRIVE  
 Sheet No.: 6.01