

SCALE: 1"=20'



DREES CUSTOM HOMES L.P.  
6225 N. STATE HIGHWAY 161, SUITE 400, IRVING, TX 75038 (972) 953-4300

**SUBDIVISION NOTES**

**CUSTOMER AGREEMENT**

I UNDERSTAND THAT MY NEW DREES HOME WILL BE BUILT IN GENERAL CONFORMANCE TO THE PLANS, SPECIFICATIONS, SELECTIONS AND THE PURCHASE AGREEMENT, ALL OF WHICH I HAVE REVIEWED AND APPROVED. THIS SET OF PLANS MAY NOT REFLECT THE ELEVATIONS OR OPTIONS FOR MY HOUSE. DREES DRAWS THE STANDARD PLANS COMPLETE WITH THE MOST COMMON OPTIONS. THE SUBCONTRACTORS' SETS WILL SHOW THE OPTIONS I SELECTED IN MY SELECTION SHEETS.

I HAVE REVIEWED THE PLOT PLAN FOR MY HOUSE AND UNDERSTAND THAT THERE MAY BE SOME FIELD ADJUSTMENTS AS TO THE EXACT LOCATION OF THE HOUSE ON THE LOT.

I FURTHER UNDERSTAND THAT MY HOME WILL NOT BE BUILT EXACTLY LIKE ANY OTHER DREES HOME OR MODEL AND THAT SOME MINOR VARIATION FROM MY PLANS AND SPECIFICATIONS MAY OCCUR SINCE EVERY HOME THAT IS BUILT HAS IT'S OWN SET OF UNIQUE CONSTRUCTION PROBLEMS THAT MUST BE DEALT WITH AS THE HOME IS BEING BUILT.

DATE: \_\_\_\_\_ BUILDER: \_\_\_\_\_  
(PLEASE PRINT)

CUSTOMER: \_\_\_\_\_ CUSTOMER: \_\_\_\_\_

**DESCRIPTION**

MERIDIANA  
SECTION 66  
BRAZORIA COUNTY, TEXAS

CONTRACT REVISIONS:

RESIDENCE FOR: MARKET

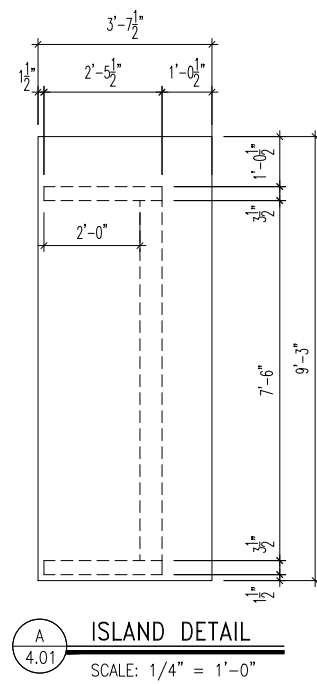
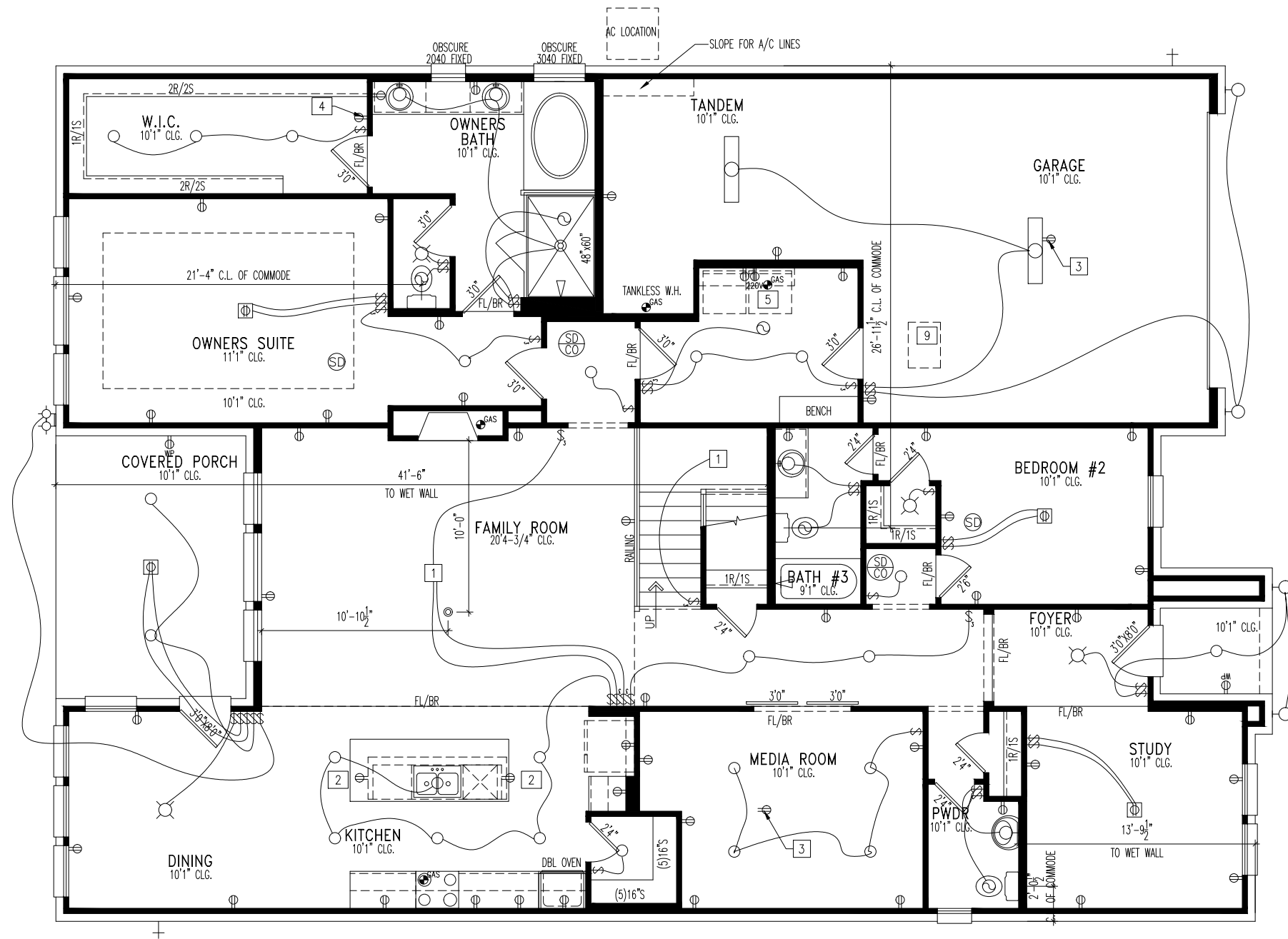
CONSTRUCTION ADDRESS: 3423 BENITO STREET

CONTRACT BY: JRT SUBDIVISION: MERIDIANA SHEET NO.

PHONE NO.: (859) 578-4322 JOB #: MER6-0035-1

CONTRACT DATE: 1/25/21

OP. 1



**General Notes**  
1. REFER TO SHEET ON.1 FOR GENERAL NOTES.

- Key Notes**
- 1 TO LIGHT OR SWITCH
  - 2 HOLD OUTLET HIGH ON ISLAND
  - 3 OUTLET IN CEILING
  - 4 OUTLET @ 45° A.F.F.
  - 5 WASHER TO THE LEFT OF DRYER
  - 6 --
  - 7 --
  - 8 --
  - 9 22-1/2" x 32" ATTIC ACCESS
  - 10 --

**Mechanical Legend**

<ul style="list-style-type: none"> <li>PHONE JACK</li> <li>HOME OFFICE OUTLET</li> <li>DATA OUTLET</li> <li>PROJECTOR ROUGH-IN</li> <li>ENTERTAINMENT CENTER OUTLET</li> <li>WALL OUTLET</li> <li>WEATHERPROOF OUTLET</li> <li>220 OUTLET</li> <li>GROUND FAULT OUTLET</li> <li>FLOOR OUTLET</li> <li>CABLE TELEVISION JACK</li> <li>SINGLE POLE SWITCH</li> <li>3-WAY SWITCH</li> <li>4-WAY SWITCH</li> <li>BLOCK, MOUNT, &amp; SWITCH FOR FUTURE FAN/LIGHT COMBINATION (CENTER, UNLESS OTHERWISE NOTED)</li> <li>EXHAUST FAN AND LIGHT COMBINATION</li> <li>FLOOR DRAIN</li> </ul>	<ul style="list-style-type: none"> <li>FLUORESCENT LIGHT</li> <li>UNDER CABINET LIGHTING</li> <li>CLG. MOUNTED LIGHT FIXT.</li> <li>WALL MOUNTED LIGHT FIXT.</li> <li>SURFACE MOUNT DISC LIGHT OR RECESSED CEILING LIGHT, PER SPECS.</li> <li>DOUBLE SPOTLIGHT FIXT.</li> <li>DIRECTIONAL CAN LIGHT</li> <li>PIN LIGHT</li> <li>WALL SCONCE @ 5'-6" A.F.F.</li> <li>STAIR LIGHT</li> <li>CLG. MTD. EXHAUST FAN</li> <li>WALL MTD. EXHAUST FAN</li> <li>SMOKE DETECTOR</li> <li>HOSE BIB</li> <li>GAS HOOK UP</li> <li>CO DETECTOR</li> <li>SMOKE DETECTOR/CO DETECTOR COMBINATION</li> </ul>
--------------------------------------------------------------------------------------------------------------------------------------------------------------------------------------------------------------------------------------------------------------------------------------------------------------------------------------------------------------------------------------------------------------------------------------------------------------------------------------------------------------------------------------------------------------------------------------	----------------------------------------------------------------------------------------------------------------------------------------------------------------------------------------------------------------------------------------------------------------------------------------------------------------------------------------------------------------------------------------------------------------------------------------------------------------------------------------------------------------------------------------------------------------------------------------------



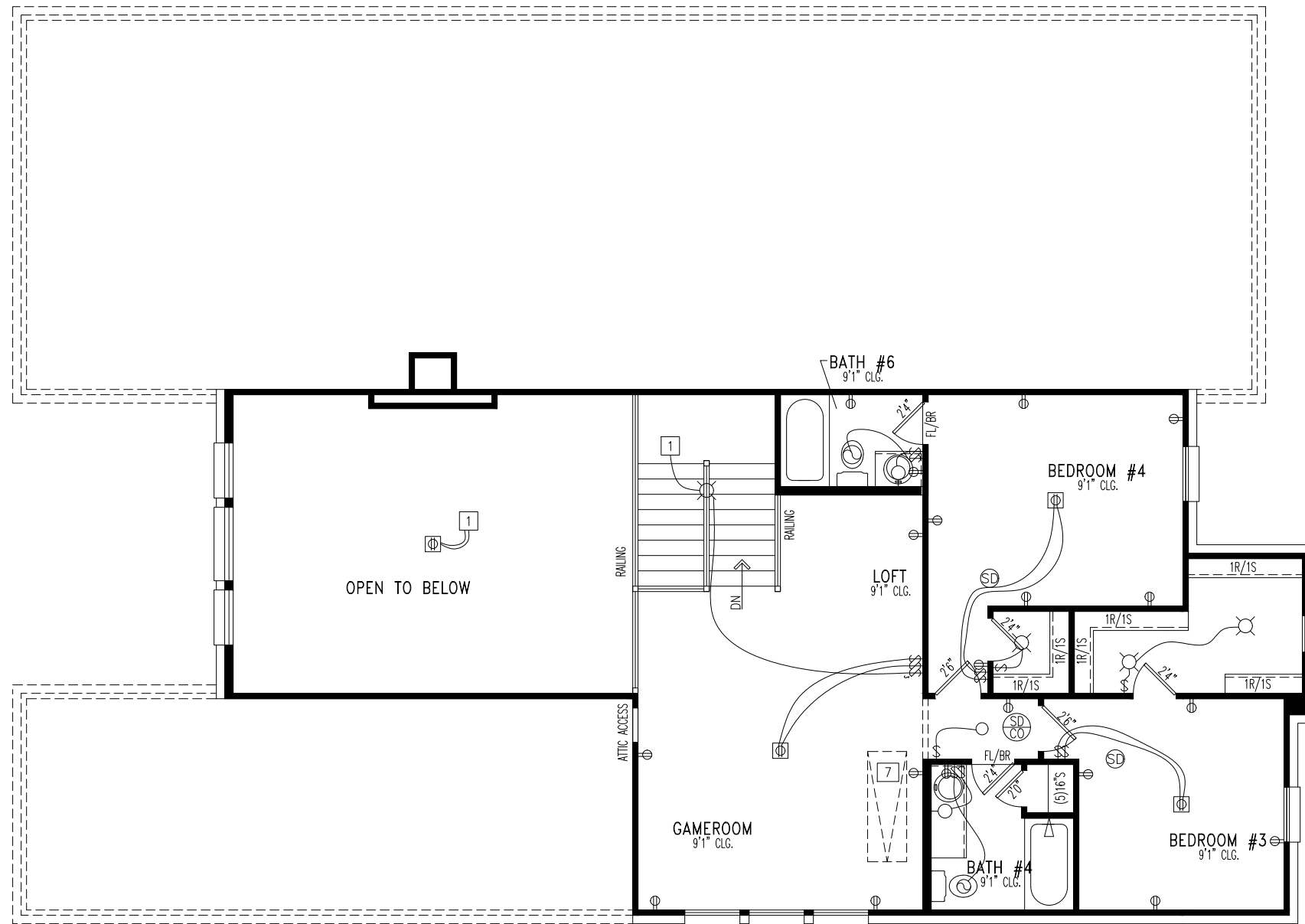
DREES CUSTOM HOMES L.P.  
11125 EQUITY DRIVE, SUITE 110 HOUSTON, TX 77041  
(281) 653-8850  
Copyright © 2018, (2020) The Drees Company. All Rights Reserved. No portion of this material may be reproduced in any form or by any means, including photocopying, without the express written permission of the Drees Company. The Drees Company will vigorously prosecute any unauthorized use of this material.

House: **DEERFIELD II**  
Series: SERIES\_NM  
Plan No.: 7014

Std. Drawn By: STD\_BY  
Std. Chk. By: ARC  
Std. Date: STD\_DATE  
Date of Last Rev: REV\_DATE  
Sheet Description: **FIRST FLOOR MECHANICAL PLAN ELEVATION "D"**  
SCALE: 1/8" = 1'-0"

Contract Drawn By: JRT  
Phone #:   
Coordinator's Name: LISA C.  
Coordinator's Phone #: 859-578-4322  
mer6-0035-1 Deerfield II.dwg Jan 26, 2021 - 9:19pm

Subdivision: MERIDIANA  
Job #: MER6-0035-1  
Customer Name: MARKET  
Job Address: 3423 BENITO DRIVE  
Sheet No.: **4.01**



**General Notes**  
 1. REFER TO SHEET ON.1 FOR GENERAL NOTES.

- Key Notes**
- 1 TO LIGHT OR SWITCH
  - 2 --
  - 3 ---
  - 4 --
  - 5 --
  - 6 --
  - 7 PULL DOWN STAIRS W/ LIGHT AND OUTLET (25 1/2" x 54")
  - 8 --
  - 9 --
  - 10 --

**Mechanical Legend**

<ul style="list-style-type: none"> <li>◀ PHONE JACK</li> <li>⬇ HOME OFFICE OUTLET</li> <li>Ⓜ DATA OUTLET</li> <li>Ⓜ PROJECTOR ROUGH-IN</li> <li>Ⓜ ENTERTAINMENT CENTER OUTLET</li> <li>Ⓜ WALL OUTLET</li> <li>Ⓜ WEATHERPROOF OUTLET</li> <li>Ⓜ 220 OUTLET</li> <li>Ⓜ GROUND FAULT OUTLET</li> <li>Ⓜ FLOOR OUTLET</li> <li>Ⓜ CABLE TELEVISION JACK</li> <li>Ⓜ SINGLE POLE SWITCH</li> <li>Ⓜ 3-WAY SWITCH</li> <li>Ⓜ 4-WAY SWITCH</li> <li>Ⓜ BLOCK, MOUNT, &amp; SWITCH FOR FUTURE FAN/LIGHT COMBINATION (CENTER, UNLESS OTHERWISE NOTED)</li> <li>Ⓜ EXHAUST FAN AND LIGHT COMBINATION</li> </ul>	<ul style="list-style-type: none"> <li>Ⓜ FLUORESCENT LIGHT</li> <li>Ⓜ UNDER CABINET LIGHTING</li> <li>Ⓜ CLG. MOUNTED LIGHT FIXT.</li> <li>Ⓜ WALL MOUNTED LIGHT FIXT.</li> <li>Ⓜ SURFACE MOUNT DISC LIGHT OR RECESSED CEILING LIGHT, PER SPECS.</li> <li>Ⓜ DOUBLE SPOTLIGHT FIXT.</li> <li>Ⓜ DIRECTIONAL CAN LIGHT</li> <li>Ⓜ PIN LIGHT</li> <li>Ⓜ WALL SCONCE @ 5'-6" A.F.F.</li> <li>Ⓜ STAIR LIGHT</li> <li>Ⓜ CLG. MTD. EXHAUST FAN</li> <li>Ⓜ WALL MTD. EXHAUST FAN</li> <li>Ⓜ SMOKE DETECTOR</li> <li>Ⓜ HOSE BIB</li> <li>Ⓜ SHOWER HEAD</li> <li>Ⓜ GAS HOOK UP</li> <li>Ⓜ CO DETECTOR</li> <li>Ⓜ SMOKE DETECTOR/CO DETECTOR COMBINATION</li> </ul>
-------------------------------------------------------------------------------------------------------------------------------------------------------------------------------------------------------------------------------------------------------------------------------------------------------------------------------------------------------------------------------------------------------------------------------------------------------------------------------------------------------------------------------------------------------------------------------------------------	-------------------------------------------------------------------------------------------------------------------------------------------------------------------------------------------------------------------------------------------------------------------------------------------------------------------------------------------------------------------------------------------------------------------------------------------------------------------------------------------------------------------------------------------------------------------------------------------------------------------------------------------------------



DREES CUSTOM HOMES L.P.  
 11125 EQUITY DRIVE, SUITE 110 HOUSTON, TX 77041  
 (281) 653-8850  
 Copyright © 2018, (2020) The Drees Company. All Rights Reserved. No portion of this material may be reproduced in any form or by any means, including photocopying, without the express written permission of the Drees Company. The Drees Company will vigorously prosecute any unauthorized use of this material.

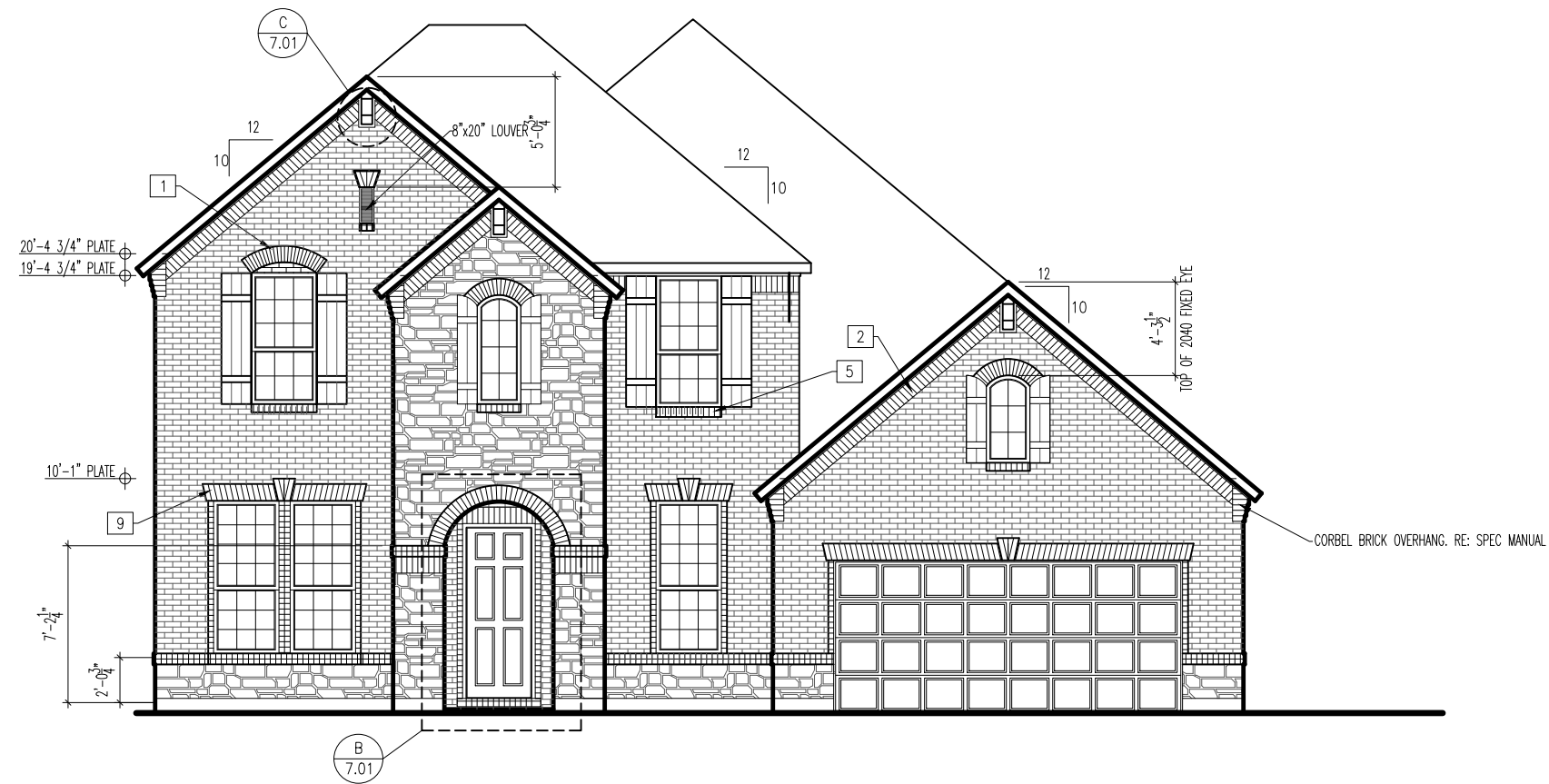
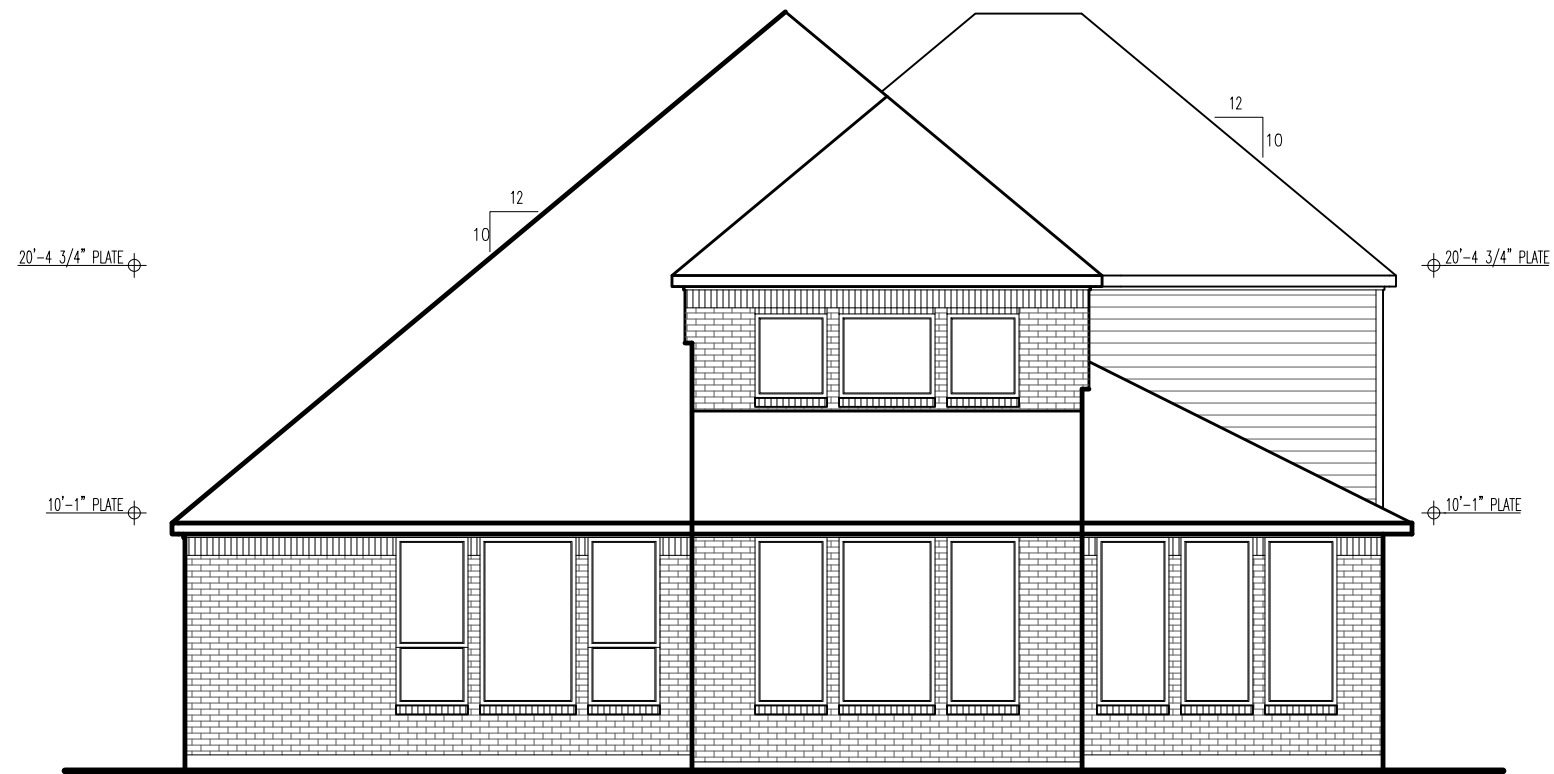
House: **DEERFIELD II**  
 Series: SERIES\_NM  
 Plan No.: 7014

Std. Drawn By: STD\_BY  
 Std. Chk. By: ARC  
 Std. Date: STD\_DATE  
 Date of Last Rev: REV\_DATE  
 Sheet Description: **SECOND FLOOR MECHANICAL PLAN ELEVATION "D"**  
 SCALE: 1/8" = 1'-0"

Contract Drawn By: JRT  
 Phone #:   
 Coordinator's Name: LISA C.  
 Coordinator's Phone #: 859-578-4322  
 mer6-0035-1 Deerfield II d.dwg Jan 26, 2021 - 9:19pm  
 Original Site Specific Dwg. & Effective Change Order Date: 1-25-21

Subdivision:	MERIDIANA	Sheet No.
Job #:	MER6-0035-1	4.02
Customer Name:	MARKET	
Job Address:	3423 BENITO DRIVE	

**NOTE:**  
6" FASCIA  
4" FRIEZE



**General Notes**

1. REFER TO SHEET ON.1 FOR GENERAL NOTES.
2. ROOFING MATERIAL PER SPECIFICATIONS

**Key Notes**

- 1 BRICK PAVER SOLDIER COURSE (PULL 3/4")
- 2
- 3
- 4
- 5
- 6
- 7
- 8
- 9 SOLDIER COURSE ON 77 DEGREE ANGLE (PULL 3/4")
- 10 BRICK KEYSTONE

**BRICK and STONE LINTEL SCHEDULE**

	SPAN	36" HIGH	48" HIGH	LINTEL SIZE	WINDOW ABOVE
*BRICK	Up to 6'-0"	---	---	L3 1/2 x 3 1/2 x 1/4	---
	Up to 8'-3"	---	---	L5 x 3 1/2 x 5/16	---
	Up to 9'-3"	---	---	L6 x 4 x 5/16	L7 x 4 x 3/8
	Up to 16'-3"	L7 x 4 x 3/8	L8 x 4 x 1/2	L8 x 4 x 1/2	**per Design
	Up to 6'-0"	---	---	L4 x 3 1/2 x 1/4	---
*STONE	Up to 8'-3"	---	---	L5 x 3 1/2 x 5/16	---
	Up to 9'-3"	---	L6 x 4 x 3/8	L7 x 4 x 3/8	**per Design
	Up to 16'-3"	---	L8 x 4 x 1/2	**per Design	**per Design

All Lintels: 4" Minimum bearing required each end  
 \* Brick is based on 40psf and Stone is based on 60psf  
 \*\* Any lintels not described by the above parameters shall be specifically designed.



DREES CUSTOM HOMES L.P.  
 11125 EQUITY DRIVE, SUITE 110 HOUSTON, TX 77041  
 (281) 653-8850

Copyright © 2020 Drees Custom Homes, L.P. All rights reserved. No portion of this document may be reproduced or transmitted in any form or by any means, including electronic, mechanical, photocopying, recording, or by any information storage and retrieval system, without the prior written permission of Drees Custom Homes, L.P. All other rights reserved.

House: **DEERFIELD II**  
 Series: SERIES\_NM Plan No.: 7014

Std. Drawn By: STD\_BY  
 Std. Chk. By: ARC  
 Std. Date: STD\_DATE  
 Date of Last Rev: REV\_DATE

Sheet Description: **FRONT & REAR ELEVATIONS ELEVATION "D"**

SCALE: 1/8" = 1'-0"

Contract Drawn By: JRT  
 Phone #:  
 Coordinator's Name: LISA C.  
 Coordinator's Phone #: 859-578-4322

Original Site Specific Dwg. & Effective Change Order Date:

1-25-21

Subdivision: MERIDIANA  
 Job #: MER6-0035-1  
 Customer Name: MARKET  
 Job Address: 3423 BENITO DRIVE

Sheet No.: **6.01**